

ARMY TM 11-5895-414-40P
NAVY NAVELEX 0967-LP-301-5670
AIR FORCE TO 31S5-2FYQ42-224

GENERAL SUPPORT MAINTENANCE REPAIR

PARTS AND SPECIAL TOOLS LISTS

(INCLUDING DEPOT MAINTENANCE REPAIR

PARTS AND SPECIAL TOOLS)

FOR

SYSTEM DISTRIBUTION AND

PATCHING EQUIPMENT

F O R

AUTOMATIC DIGITAL MESSAGE

SWITCHING CENTERS

AN/FYQ-42(V)5 5895-00-832-9069,
AN/FYQ-42(V)6 5895-00-832-9075,
AN/FYQ-42(V)7 5895-00-832-9069,
AN/FYQ-42(V)8 5895-00-832-9344,
AN/FYQ-42(V)9 5895-00-832-9343,
AN/FYQ-42(V)10 5895-00-832-9346,
AN/FYQ-42(V)11 5895-00-832-9347,
AN/FYQ-42(V)12 5895-00-832-9348, and
AN/FYQ-42(V)T-1 6940-00-832-9342,

DEPARTMENTS OF THE ARMY, THE NAVY, AND THE AIR FORCE

10 August 1978

*TM 11-5895-414-40P
NAVELEX 0967-LP-301-5670
TO 31S5-2FYQ42-224

TECHNICAL MANUAL
No. 11-5895-414-40P
TECHNICAL MANUAL
NAVELEX 0967-LP-301-5670
Technical Order
TO 31S5-2FYQ42-224

DEPARTMENTS OF THE ARMY,
THE NAVY, AND THE AIR FORCE
WASHINGTON, DC, 10 August 1978

**GENERAL SUPPORT MAINTENANCE REPAIR
PARTS AND SPECIAL TOOLS LISTS
(INCLUDING DEPOT MAINTENANCE REPAIR
PARTS AND SPECIAL TOOLS)
FOR
SYSTEM DISTRIBUTION AND PATCHING
EQUIPMENT FOR AUTOMATIC DIGITAL MESSAGE
SWITCHING CENTERS**

**AN/FYQ-42(V)1 5895-00-832-9349,
AN/FYQ-42(V)2 5895-00-832-9350,
AN/FYQ-42(V)3 5895-00-832-9060,
AN/FYQ-42(V)4 5895-00-832-9063,
AN/FYQ-42(V)5 5895-00-832-9069,
AN/FYQ-42(V)6 5895-00-832-9075,
AN/FYQ-42(V)7 5895-00-832-9345,
AN/FYQ-42(V)8 5895-00-832-9344,
AN/FYQ-42(V)9 5895-00-832-9343,
AN/FYQ-42(V)10 5895-00-832-9346,
AN/FYQ-42(V)11 5895-00-832-9347,
AN/FYQ-42(V)12 5895-00-832-9348, and
AN/FYQ-42(V)T-1 6940-00-832-9342**

Current as of 14 December 1977

REPORTING OF ERRORS

You can improve this manual by recommending improvements using DA Form 2028-2 located in the back of the manual. Simply tear out the self addressed form, fill it out as shown on the sample, fold it where shown, and drop it in the mail.

If there are no blank DA Forms 2028-2 in the back of your manual, use the standard DA Form 2028 (Recommended Changes to Publications and Blank Forms) and forward to the Commander, US Army Communications and Electronics Materiel Readiness Command, ATTN: DRSEL-MA-Q, Fort Monmouth, NJ 07703.

For Air Force, submit AFTO Form 22 (Technical Order System Publications Improvement Report and Reply) in accordance with paragraph 6-5, Section VI, T.O. 00-5-1. Forward direct to prime ALC/MST.

For Navy, mail comments direct to: Commander, Naval Electronics Systems Command, Training and Publications Management Office, ELEX 04F3, P.O. Box 80337, San Diego, California 92138.

In either case, a reply will be furnished direct to you.

Table of Contents

		Page	Illus Figure
SECTION I.	Introduction	1	
II.	Repair parts list	5	
GROUP 00	Patching equipment	5	
01	Audio frequency panel, D15770	5	1
02	Miscellaneous jack panel, D15774	7	2
03	Autovon line panel, D15775	9	3
04	Access trunk panel, D15782	11	4
05	Telephone Set TA-764/FYA (See TM 11-5895-428-40P for parts)		
06	Patch cord hanger panel, 368-40000-2	13	5
07	Line jack panel, D15779	15	6
08	Sensor jack panel, D15777	17	7
09	Miscellaneous jack panel, D15776	19	8
10	Line jack panel, D15771	21	9
	Mounting shelf, PEC3139-2 (See TM 11-5895-411-40P for parts)		
12	Power Supply PP-4821/G (See TM 11-5895-411-40P for parts)		
13	Filler panel, PEC3139- (See TM 11-5895-411-40P for parts)		
14	Red line driver, 14242	23	10
15	Intercommunications Station LS-553/FY (See TM 11-5895-416-40P for parts)		
16	Line driver assembly, 6660-2172 (See TM 11-5895-413-40P for parts)		
17	DC patch panel, D15773	25	11
18	Loop Resistance Panel		
	Loop resistance panel, D15780	27	12
	Resistor assembly, D15982	29	13
	Resistor assembly, D15980	31	14
	Resistor assembly, D15981	33	15
19	Meter Assembly, Electrical ME-331/G (See TM 11-5895-411-40P for parts)		
20	Taper pin panel, 398-10208-1	35	16
21	Attenuator Assembly CN-1188/G (See TM 11-5895-411-40P for parts)		
22	Miscellaneous jack panel, D15772	37	17
23	Line jack panel, 100003047-001	39	18
24	Miscellaneous Jack Panel		
	Miscellaneous jack panel, 100003047-002	41	19
	Terminal board, 130-1228	43	20

	Page	Illus Figure
25 Patchcord assemblies	45	21
26 Fuse panel.	47	22
SECTION III. Special tools list (Not applicable)		
SECTION IV. National stock number and part number index	48	

SECTION I
INTRODUCTION

1. Scope

This manual lists repair parts required for performance of general support maintenance of the System Distribution and Patching Equipment for Automatic Digital Message Switching Centers AN/FYQ-42(V)1 through AN/FYQ-42(V)12 and AN/FYQ-42(V)T1.

2. General

This repair parts and special tools list is divided into the following sections:

a. Section II. Repair Parts List. A list of repair parts authorized for use in the performance of maintenance. The list also includes parts which must be removed for replacement of the authorized parts. Parts lists are composed of functional groups in ascending numerical sequence, with the parts in each group listed in figure and item number sequence.

b. Section II. Special Tools List. No applicable.

c. Section IV. National Stock Number and Part Number Index. A list, in ascending numerical sequence, of all National stock numbers appearing in the listings, followed by a list, in alpha-numeric sequence, of all part numbers appearing in the listings. National stock numbers and part numbers are cross-referenced to each illustration figure and item number appearance.

3. Explanation of Columns

The following provides an explanation of columns found in the tabular listings:

a. Illustration. This column is divided as follows:

(1) *Figure number.* Indicates the figure number of the illustration in which the item is shown.

(2) *Item number.* The number used to identify each item called out in the illustration.

b. Source, Maintenance, and Recoverability Codes (SMR).

(1) *Source code.* Source codes are assigned to support items to indicate the manner of acquiring support items for maintenance, repair, or overhaul of end items. Source codes are entered in the first and second positions of the Uniform SMR Code format as follows:

Code

Definition

PA—Item procured and stocked for anticipated or known usage.

AH—Item to be assembled at general support maintenance level.

XD—A support item that is not stocked. When required, item will be procured through normal supply channels.

NOTE

Cannibalization or salvage may be used as a source of supply for any items source coded above except those coded XA, XD, and aircraft support items as restricted by AR 750-42.

(2) *Maintenance code.* Maintenance codes are assigned to indicate the levels of maintenance authorized to USE and REPAIR support items. The maintenance codes are entered in the third and fourth positions of the Uniform SMR Code format as follows:

(a) The maintenance code entered in the third position will indicate the lowest maintenance level authorized to remove, replace, and use the support item. The maintenance code entered in the third position will indicate the following level of maintenance:

Code

Application/Explanation

H—Support item is removed, replaced, used at the general support level.

(b) The maintenance code entered in the fourth position indicates whether the item is to be repaired and identifies the lowest maintenance level with the capability to perform complete repair (i.e., all authorized maintenance functions). This position will contain one of the following maintenance codes:

Code

Application/Explanation

H—The lowest maintenance level capable of complete repair of the support item is the general support level.

D—The lowest maintenance level capable of complete repair of the support item is the depot level.

Z—Nonreparable. No repair is authorized.

(3) *Recoverability code.* Recoverability codes are assigned to support items to indicate the

disposition action on unserviceable items. The recoverability code is entered in the fifth position of the Uniform SMR Code format as follows:

<i>Recoverability Codes</i>	<i>Definition</i>
Z—Nonreparable item.	When unserviceable, condemn and dispose at the level indicated in position 3.
D—Reparable item.	When beyond lower level repair capability, return to depot. Condemnation and disposal not authorized below depot level.
<i>c. National Stock Number.</i> Indicates the National stock number assigned to the item and will be used for requisitioning purposes.	
<i>d. Part Number.</i> Indicates the primary number used by the manufacturer (individual, company, firm, corporation, or Government activity), which controls the design and characteristics of the item by means of its engineering drawings, specifications standards, and inspection requirements, to identify an item or range of items.	

NOTE

When a stock-numbered item is requisitioned, the repair part received may have a different part number than the part being replaced.

e. Federal Supply Code for Manufacturer (FSCM). The FSCM is a 5-digit numeric code listed in SB 708-42 which is used to identify the manufacturer, distributor, or Government agency, etc.

f. Description. Indicates the Federal item name and, if required, a minimum description to identify the item.

g. Unit of Measure (U/M). Indicates the standard of the basic quantity of the listed item as used in performing the actual maintenance function. This measure is expressed by a two-character alphabetical abbreviation (e.g., ea, in, pr, etc.). When the unit of measure differs from the unit of issue, the lowest unit of issue that will satisfy the required units of measure will be requisitioned.

h. Quantity Incorporated in Unit. Indicates the quantity of the item used in the breakout shown on the illustration figure, which is prepared for a functional group, subfunctional group, or an assembly.

4. Special Information

a. Detailed assembly instructions for items source coded to be assembled are found in TM

11-5895-414-15, TM 11-5895-413-15/1, TM 11-5895-413-15/2, TM 11-5895-411-15, TM 11-5895-416-15, and TM 11-5895-428-15. Assembly components are listed immediately following the item to be assembled.

b. The following publications pertain to System Distribution and Patching Equipment for Automatic Digital Message Switching Centers AN/FYQ-42(V)1 through AN/FYQ-42(V)12 and AN/FYQ-42(V)T1.

TM 11-5895-391-15, Automatic Digital Message Switching Centers AN/FYQ-42(V)1 through AN/FYQ-42(V)12 and AN/FYQ-42(V)T1 (NAVELEX 0967-LP-301-5013; TO 31S5-2FYQ42-1)

TM 11-5895-410-15, Filter, Isolation, and Converter Units for Automatic Digital Message Switching Centers AN/FYQ-42(V)1 through AN/FYQ-42(V)12 and AN/FYQ-42(V)T1 (NAVSHIPS 0967-301-5190; TO 31S5-2FYQ42-51)

TM 11-5895-410-40P, Filter, Isolation, and Converter Units for Automatic Digital Message Switching Centers AN/FYQ-42(V)1 through AN/FYQ-42(V)12 and AN/FYQ-42(V)T1 (NAVELEX 0967-301-5640; TO 31S5-2FYQ42-214)

TM 11-5895-411-15, Test Set, Electronic Systems AN/FYM-22 (NAVSHIPS 0967-301-5200; TO 31S5-2FYM22-1)

TM 11-5895-411-40P, Test Set, Electronic Systems AN/FYM-22 (NAVELEX 0967-301-5660; TO 31S5-2FYM22-14)

TM 11-5895-413-15/1, Station Timing Units TD-863/FYA-11, TD-865/FYA-12, TD-866/FYA-13, TD-867/FYA-14, TD-868/FYA-15, TD-870/FYA-16, TD-871/FYA-17, TD-872/FYA-18, TD-873/FYA-19, TD-876/FYA-20, TD-877/FYA-21, TD-878/FYA-22, and TD-879/FYA-T1, Overall Functional Description (NAVELEX 0967-LP-301-5211; TO 31S5-2FYQ42-161-1)

TM 11-5895-413-15/2, Station Timing Units TD-863/FYA-11, TD-865/FYA-12, TD-866/FYA-13, TD-867/FYA-14, TD-868/FYA-15, TD-870/FYA-16, TD-871/FYA-17, TD-872/FYA-18, TD-873/FYA-19, TD-876/FYA-20, TD-877/FYA-21, TD-878/FYA-22, and TD-879/FYA-T1, Operation and Maintenance (NAVELEX 0967-LP-301-5220; TO 31S5-2FYQ42-161-2)

TM 11-5895-413-40P, Station Timing Units

TD-863/FYA-11, TD-865/FYA-12,
TD-866/FYA-13, TD-867/FYA-14,
TD-868/FYA-15, TD-870/FYA-16,
TD-871/FYA-17, TD-872/FYA-18,
TD-873/FYA-19, TD-876/FYA-20,
TD-877/FYA-21, TD-878/FYA-22, and
TD-879/FYA-T1, Overall Functional Description
NAVELEX 0967-301-5660; TO 31S5-2FYA-184)

TM 11-5895-414-15, System Distribution and
Patching Equipment for Automatic Digital
Message Switching Centers AN/FYQ-42(V)1
through AN/FYQ-42(V)12 and AN/FYQ-42(V)T1
(NAVSHIPS 0967-301-5262; TO
31S5-2FYQ42-171)

TM 11-5895-416-15, Intercommunication Sets
AN/FYA-34 and AN/FYA-55 (NAVSHIPS
0967-LP-301-5280; TO 31S5-2FYA-131)

TM 11-5895-416-40P, Intercommunication
Sets AN/FYA-34 and AN/FYA-55 (NAVELEX
0967-301-5699; TO 31S5-2FYA-174)

TM 11-5895-428-15, Telephone Sets
TA-764/FYA and TA-765/FYA (NAVSHIPS
0967-301-5450; TO 31S5-2FYA-101)

TM 11-5895-428-40P, Telephone Sets
TA-764/FYA and TA-765/FYA (NAVELEX
0967-301-5810; TO 31S5-2FYA-154)

5. How to Locate Repair Parts

a. When National stock number or part number
is unknown:

(1) *First.* Using the table of contents,
determine the functional group or subgroup within
which the repair part belongs. This is necessary
since illustrations are prepared for functional
groups or subgroups, and listings are divided into
the same groups.

(2) *Second.* Find the illustration covering the
functional group or subgroup to which the repair
part belongs.

(3) *Third.* Identify the repair part on the
illustration and note the illustration figure and
item number of the repair part.

(4) *Fourth.* Using the Repair Parts Listing,
find the figure and item number noted on the
illustration.

b. When National stock number or part number
is known:

(1) *First.* Using the Index of National Stock
Numbers and Part Numbers, find the pertinent
National stock number or part number. This index
is in ascending NSN sequence followed by a list of
part numbers in ascending alphanumeric sequence,
cross-referenced to the illustration figure number
and item number.

(2) *Second.* After finding the figure and item
number, locate the figure and item number in the
repair parts list.

Abbreviations

Not applicable.

(Next printed page is 4).

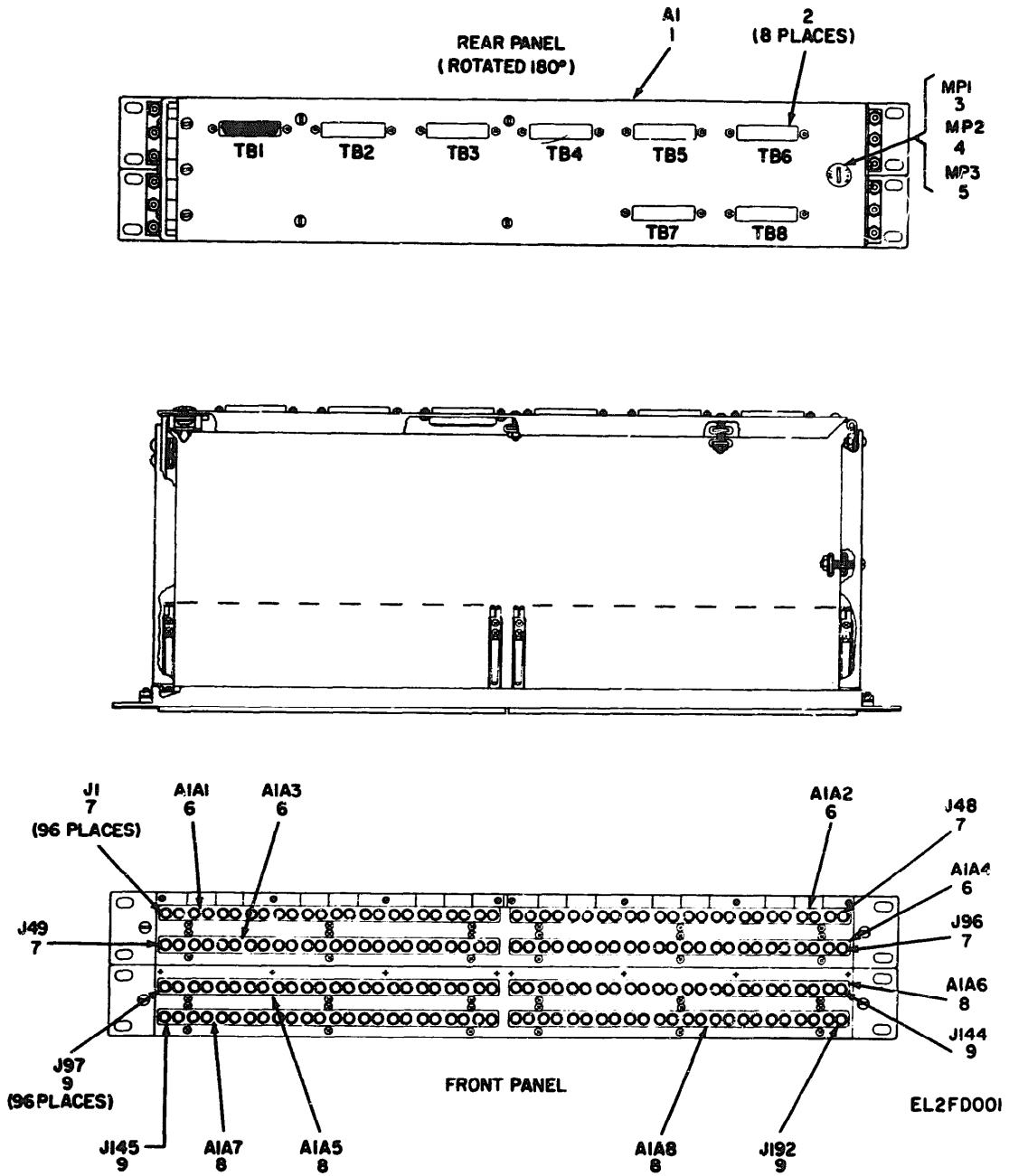


Figure 1. Audio frequency panel, D15770.

SECTION II

REPAIR PARTS LIST

(1) ILLUS		(2)	(3)	(4)	(5)	(6)	(7)	(8)
(a) FIG. NO.	(b) ITEM NO.	SMR CODE	NATIONAL STOCK NUMBER	PART NUMBER	FORM	DESCRIPTION	ASSEMBLY OR CODE	QTY INC IN UNIT
						GROUP 00 PATCHING EQUIPMENT		
						GROUP 01 AUDIO FREQUENCY PANEL		
1	1	KDHDD		015770	70 674	JACK ASSEMBLY, TELEPHONE	EA	1
1	2	PANZZ	5939-00-079-3172	17-10290	02660	CONNECTOR, RECEPTACLE, ELEC	EA	8
1	3	PANZZ	5325-00-386-5898	9-0-220	94222	STUD, TURNLOCK FASTENER	EA	1
1	4	PANZZ	5325-00-998-3351	05-47-101-15	94222	RECEPTACLE, TURNLOCK FASTENER	EA	1
1	5	PANZZ	5365-00-750-6341	05-34-101-17	94222	RING, RETAINING	EA	1
1	6	AHHHD		015319P3	70 674	INSERT ASSEMBLY	EA	4
1	7	PANZZ	5935-00-909-5682	PJ030	70 674	JACK, TELEPHONE	EA	96
1	8	AHHHD		015319P2	6674	INSERT ASSEMBLY	EA	4
1	9	PANZZ	5935-00-905-6407	PJ039	70 674	JACK, TELEPHONE	EA	96

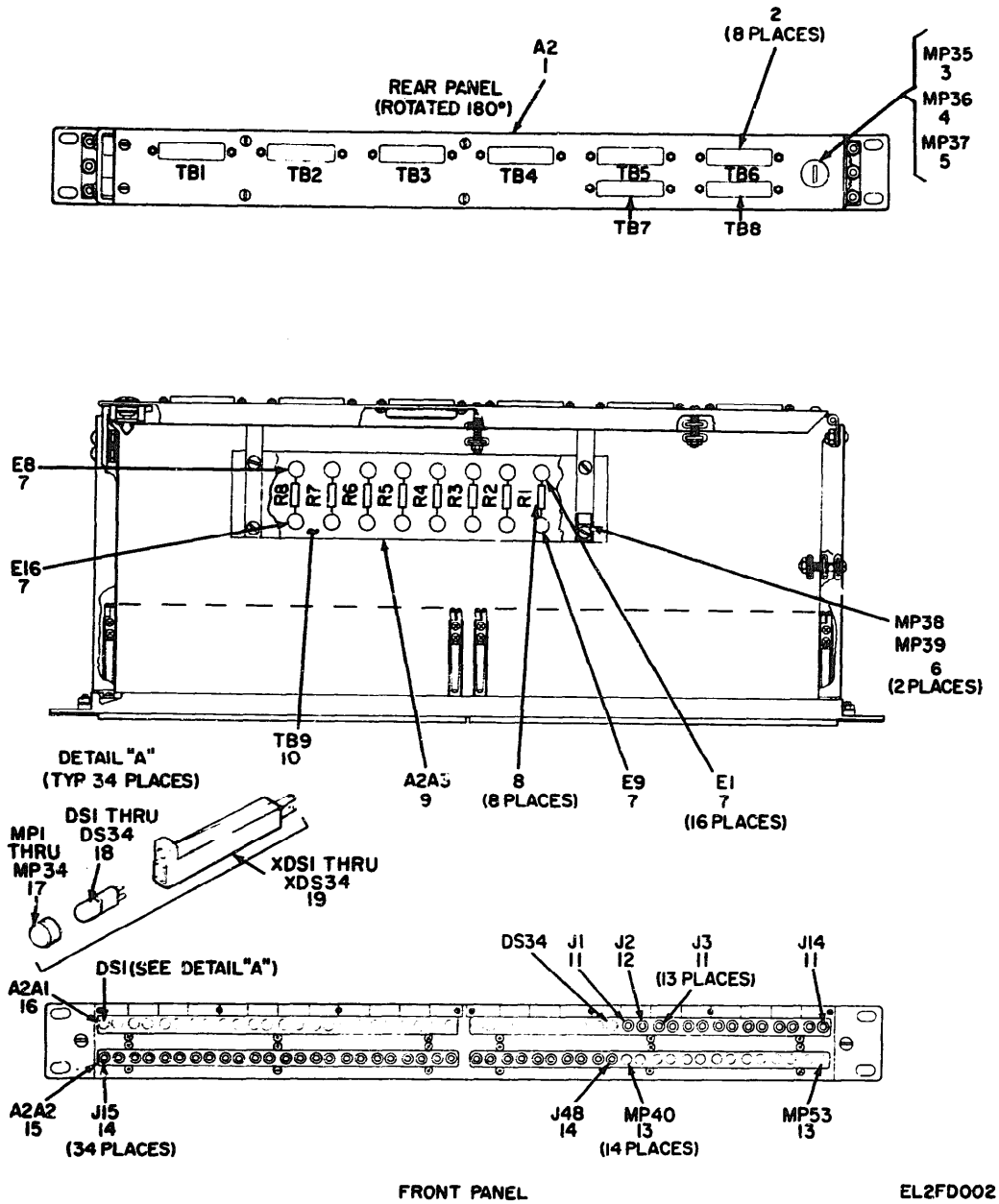


Figure 2. Miscellaneous jack panel, D15774.

TM 11-5895-414-40P / NAVELEX 0967-LP-301-5670 / TO 31S5-2FYQ42-224
REPAIR PARTS LIST (CONTINUED)

SECTION II

(1) ILLUS		(2)	(3)	(4)	(5)	(6)	(7)	(8)	
(a) FIG. NO.	(b) ITEM NO.	SER CODE	NATIONAL STOCK NUMBER	PART NUMBER	FCM	DESCRIPTION	USABLE ON CODE	UM	QTY INC IN UNIT
						GROUP 02 MISCELLANEOUS JACK PANEL			
2	1	KDHDD		D19774	70674	JACK ASSEMBLY, TELEPHONE		EA	1
2	2	PAWZZ	5935-00-079-3172	17-10290	02660	CONNECTOR, RECEPTACLE, ELEC		EA	0
2	3	PAWZZ	5325-00-286-5898	5-0-220	94222	STUD, TURNLOCK FASTENER		EA	1
2	4	PAWZZ	5325-00-994-3351	09-47-101-15	94222	RECEPTACLE, TURNLOCK FASTENER		EA	1
2	5	PAWZZ	5365-00-726-6341	09-30-101-17	94222	RING, RETAINING		EA	1
2	6	PAWZZ	5340-01-020-3591	772	03330	CLAMP, LOOP		EA	2
2	7	PAWZZ	5940-00-271-8641	129001	00245	TERMINAL, STUD		EA	16
2	8	PAWZZ	5905-00-104-0347	RGR326101JS	01349	RESISTOR, FIXED, COMPOSITION		EA	0
2	9	AMHMD		015947P1	70674	RESISTOR ASSEMBLY		EA	1
2	10	PAWZZ	3940-00-072-0046	015947P0	70674	TERMINAL BOARD		EA	1
2	11	PAWZZ	5935-00-909-5602	PJ030	70674	JACK, TELEPHONE		EA	13
2	12	PAWZZ	5935-00-905-6407	PJ039	70674	JACK, TELEPHONE		EA	1
2	13	PAWZZ	5935-00-131-9667	PJ7290	70674	BUTTON, PLUG		EA	14
2	14	PAWZZ	5935-00-877-2228	PJ041	70674	JACK, TIP		EA	34
2	15	AMHMD		015319P12	70674	INSERT ASSEMBLY		EA	1
2	16	AMHMD		015319P9	70674	INSERT ASSEMBLY		EA	1
2	17	PAWZZ	6210-00-075-0426	PJ729H	70674	LENS, INDICATOR LIGHT		EA	34
2	18	PAWZZ	6248-00-073-5759	PJ060	70374	LAMP, INCANDESCENT		EA	34
2	19	PAWZZ	6250-00-073-5828	PJ050	70674	LAMP HOLDER		EA	34

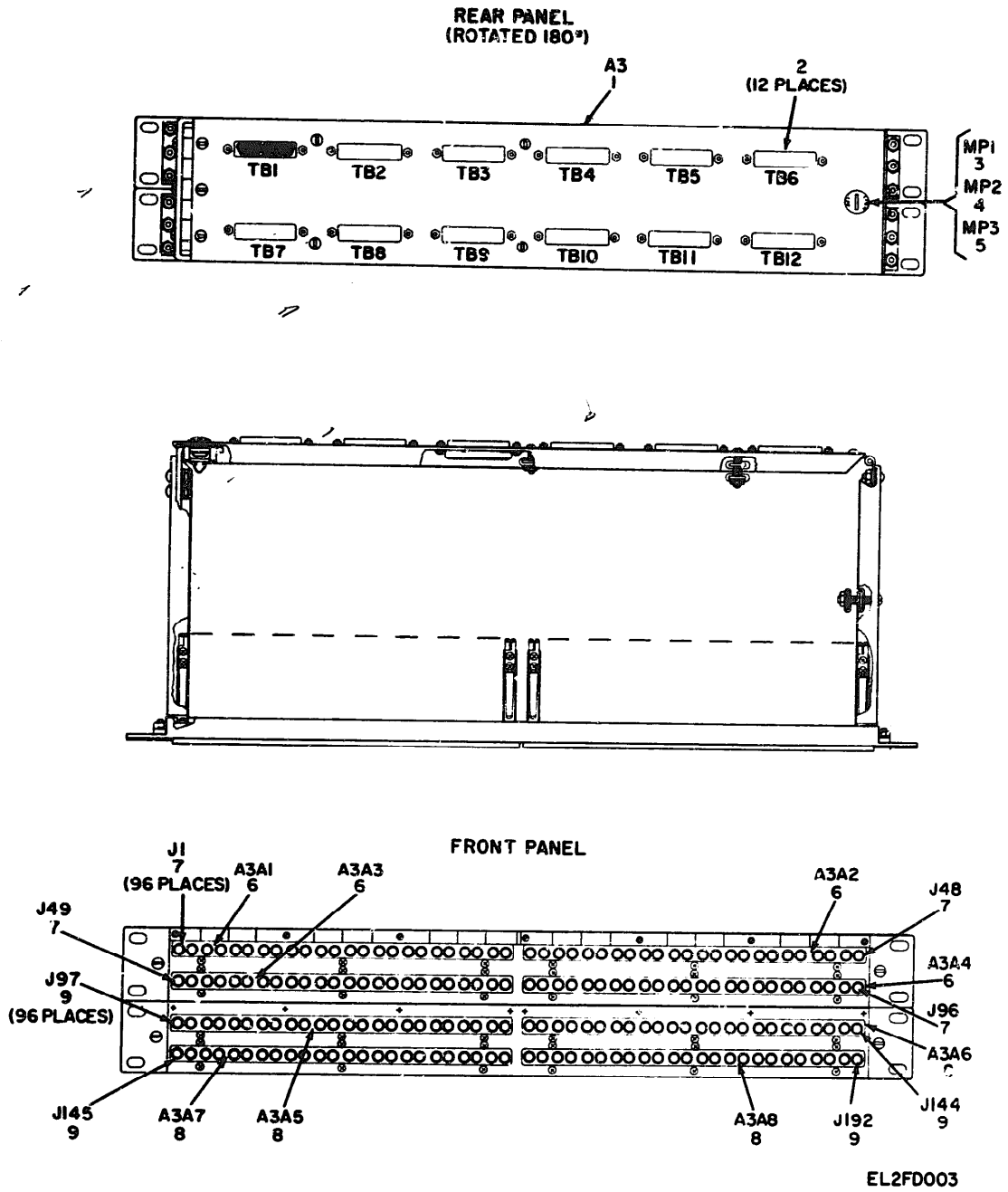


Figure 3. Autovon line panel, D15775.

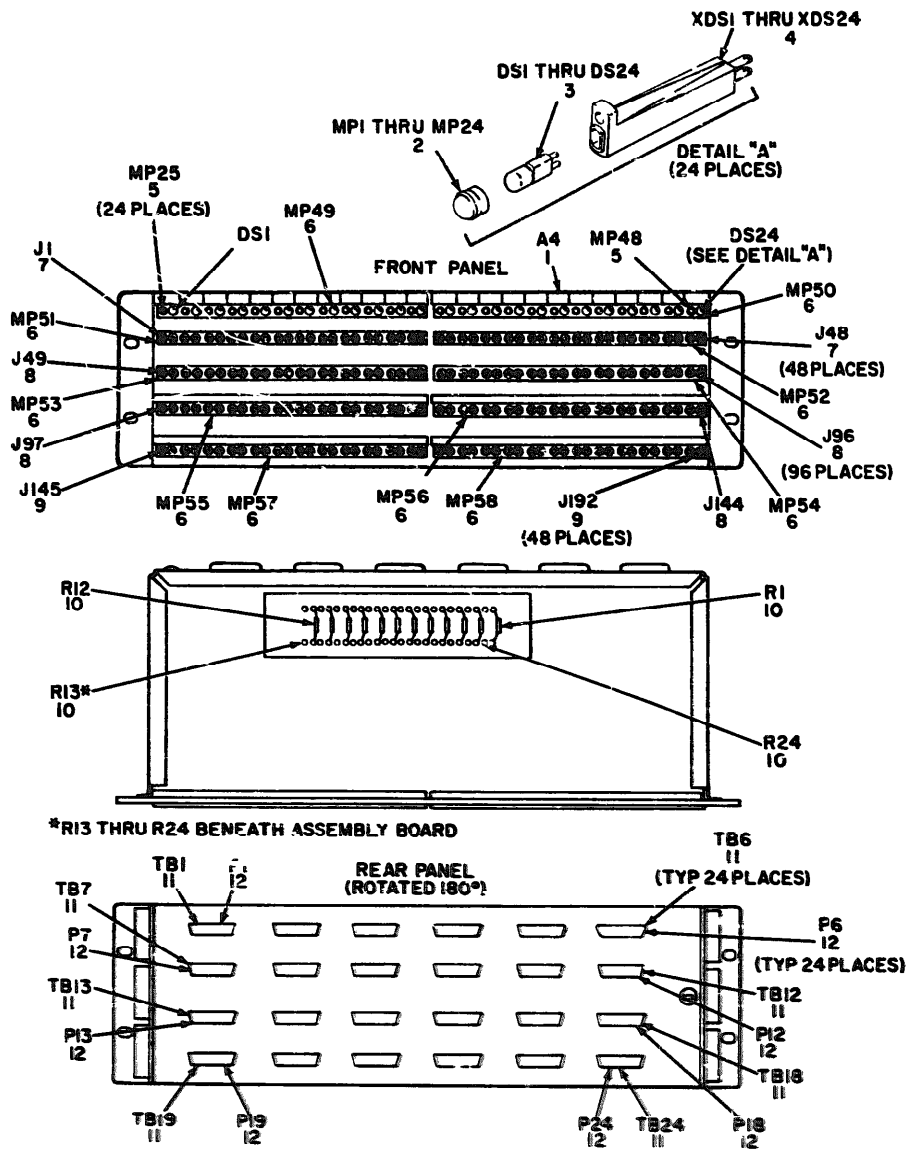
SECTION II

(1) ILLU		(2)	(3)	(4)	(5)	(6)	(7)	(8)
(A) FIG. NO.	(B) ITEM NO.	SMR CODE	NATIONAL STOCK NUMBER	PART NUMBER	P&CM	DESCRIPTION	USEABLE ON CODE	QTY INC IN LINE
						GROUP 03 AUTOVON LINE PANEL		
3	1	XDHLD		015775	70674	JACK ASSEMBLY, TELEPHONE	EA	1
3	2	PAHZZ	5935-00-079-3172	17-10250	02660	CONNECTOR, RECEPTACLE, ELEC	EA	12
3	3	PAHZZ	5325-00-286-5898	5-0-220	94222	STUD, TURNLOCK FASTENER	EA	1
3	4	PAHZZ	5325-00-998-3351	05-47-101-15	94222	RECEPTACLE, TURNLOCK FASTENER	EA	1
3	5	PAHZZ	5365-00-720-6341	05-34-101-17	94722	RING, RETAINING	EA	1
3	6	AHMH0		015319P3	70674	INSERT ASSEMBLY	EA	4
3	7	PAHZZ	5935-00-909-5682	PJ030	70674	JACK, TELEPHONE	EA	96
3	8	AHMH0		015319P6	70674	INSERT ASSEMBLY	EA	4
3	9	PAHZZ	5935-877-2215	PJ024	70674	JACK, TELEPHONE	EA	96

TM 11-5895-414-40P / NAVELEX 0967-LP-301-5670 / TO 3185-2FYQ42-224
REPAIR PARTS LIST (CONTINUED)

SECTION II

(1) ILLUS		(2)	(3)	(4)	(5)	(6)	(7)	(8)
(a) FIG. NO.	(b) ITEM NO.	SMR CODE	NATIONAL STOCK NUMBER	PART NUMBER	F&CM	DESCRIPTION	USEABLE ON CODE	QTY INC IN LINE
						GROUP 03 AUTOVON LINE PANEL		
3	1	XDHLD		015775	70674	JACK ASSEMBLY, TELEPHONE	EA	1
5	2	PAHZZ	5935-00-079-3172	17-10250	02660	CONNECTOR, RECEPTACLE, ELEC	EA	12
1	3	PAHZZ	5325-00-286-5898	5-0-220	94222	STUD, TURNLOCK FASTENER	EA	1
3	4	PAHZZ	5325-00-998-332261	05-47-101-15	94222	RECEPTACLE, TURNLOCK FASTENER	EA	1
3	5	PAHZZ	5365-00-720-6341	05-34-101-17	94722	RING, RETAINING	EA	1
3	6	AMHHD		015319P3	70674	INSERT ASSEMBLY	EA	4
3	7	PAHZZ	5835-00-989-5682	PJ030	70674	JACK, TELEPHONE	EA	96
3	8	AMHHD		015319P6	70674	INSERT ASSEMBLY	EA	4
3	9	PAHZZ	5935-00-877-2215	PJ024	70674	JACK, TELEPHONE	EA	96



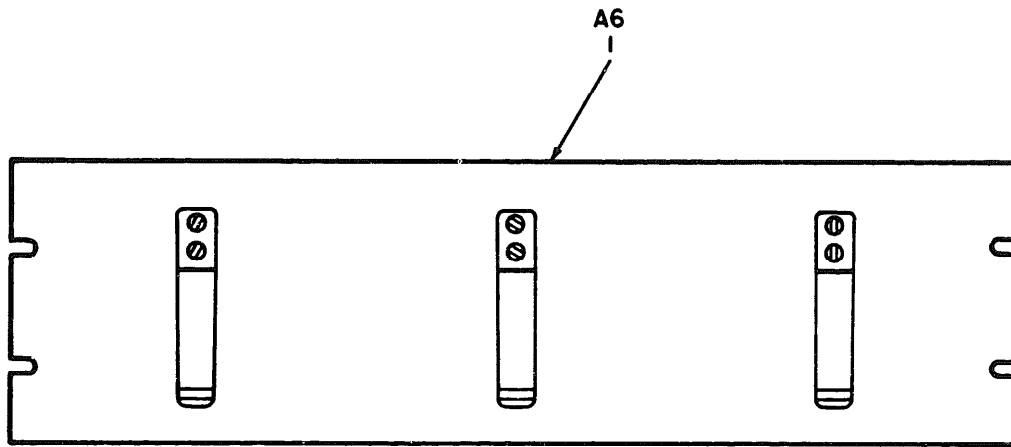
EL2FD004

Figure 4. Access trunk panel, D15782.

TM 11-5895-414-40P / NAVELEX 0967-LP-301-5670 / TO 3185-2FYQ42-224
REPAIR PARTS LIST (CONTINUED)

SECTION II

(1) ILLUS		(2)	(3)	(4)	(5)	(6)	(7)	(8)
(a) FIG. NO.	(b) ITEM NO.	SMR CODE	NATIONAL STOCK NUMBER	PART NUMBER	FSCM	DESCRIPTION	USEABLE ON CODE	UM QTY INC IN UNIT
						GROUP 04 ACCESS TRUNK PANEL		
4	1	KDHDD		015702	70674	PANEL, TEL SWITCHING BOARD		EA 1
4	2	PAWZZ	6210-00-075-0426	PJ729H	70674	LENS, INDICATOR LIGHT		EA 24
4	3	PAWZZ	6240-00-073-5759	PJ860	70674	LAMP, INCANDESCENT		EA 24
4	4	PAWZZ	6250-00-073-5020	PJ850	70674	LAMPHOLDER		EA 24
4	5	PAWZZ	5935-00-131-9867	PJ729B	70674	BUTTON, PLUG		EA 24
4	6	PAWZZ	5935-00-125-2347	PJ724	70674	INSERT, TELEPHONE		EA 18
4	7	PAWZZ	5935-00-909-5602	PJ830	70674	JACK, TELEPHONE		EA 48
4	8	PAWZZ	5935-00-077-2215	PJ824	70674	JACK, TELEPHONE		EA 96
4	9	PAWZZ	5935-00-905-6407	PJ839	70674	JACK, TELEPHONE		EA 48
4	10	PAWZZ	5905-00-256-9957	RGR426112J5	81349	RESISTOR, FIXED, COMPOSITION		EA 24
4	11	PAWZZ	5935-00-012-3409	17-10250-1	02660	CONNECTOR, RECEPTACLE, ELEC		EA 24
4	12	PAWZZ	5935-00-012-3399	17-20250-1	02660	CONNECTOR, RECEPTACLE, ELEC		EA 24



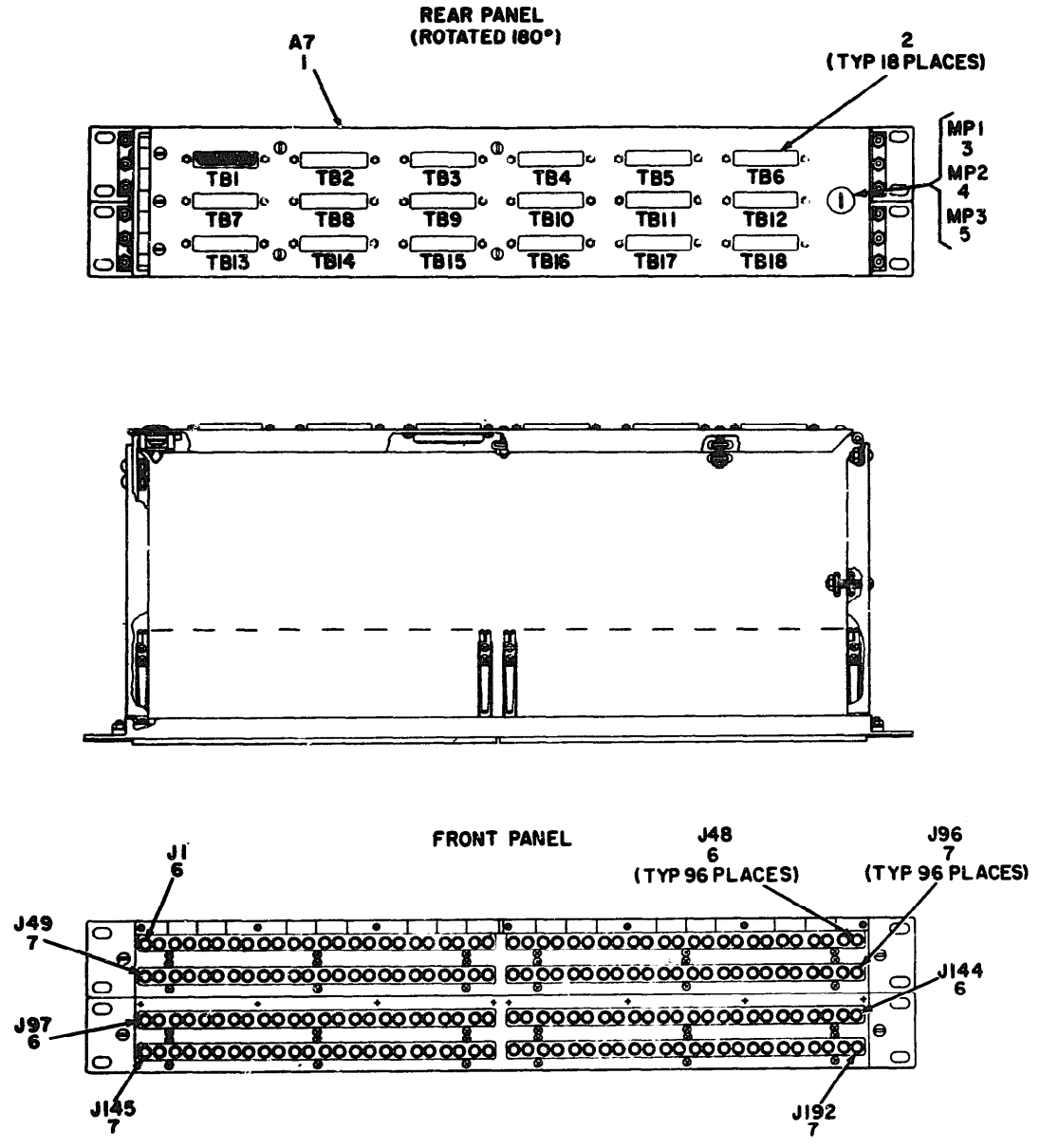
EL2FD005

Figure 5. Patch cord hanger panel, 368-40000-2.

TM 11-5895-414-40P / NAVELEX 0967-LP-301-5670 / TO 31SS-2FYQ42-224
 REPAIR PARTS LIST (CONTINUED)

SECTION II

(1) ILLUS		(2) SMR CODE	NATIONAL STOCK NUMBER	(4) PART NUMBER	(5) FSCM	(6) DESCRIPTION	USEABLE ON CODE	(7) UM	(8) QTY INC IN UNIT
(a) FIG. NO.	(b) ITEM NO.								
5	1	KDHDD		366-40 880-2	46859	GROUP 06 PATCH CORD HANGER PANEL PATCH CORD HANGER PANEL		EA	1



EL2FD006

Figure 6. Line jack panel, D15779.

TM 11-5895-414-40P / NAVELEX 0967-LP-301-5670 / TO 31S5-2FYQ42-224
REPAIR PARTS LIST (CONTINUED)

SECTION II

(1) ILLUS		(2)	(3)	(4)	(5)	(6)	(7)	(8)
(a) FIG. NO.	(b) ITEM NO.	SMR CODE	NATIONAL STOCK NUMBER	PART NUMBER	FSCM	DESCRIPTION	USEABLE ON CODE	QTY INC IN UNIT
						GROUP 07 LINE JACK PANEL, D15779		
6	1	KDHDD		015779	70674	JACK ASSEMBLY, TELEPHONE		EA 1
6	2	PAWZZ	5935-00079-3172	17-10250	02660	CONNECTOR,RECEPTACLE,ELEC		EA 10
6	3	PAWZZ	5325-00-286-5898	5-0-220	94222	STUD,TURNLOCK FASTENER		EA 1
6	4	PAWZZ	5325-00-998-3351	05-47-101-15	94222	RECEPTACLE,TURNLOCK FASTENER		EA 1
6	5	PAWZZ	5365-00-720-6341	05-34-131-17	94222	RING,RETAINING		EA 1
6	6	PAWZZ	5935-00-877-2216	PJ024G	70674	JACK,TELEPHONE		EA 96
6	7	PAWZZ	5935-00-877-2217	PJ038G	70674	JACK,TELEPHONE		EA 96

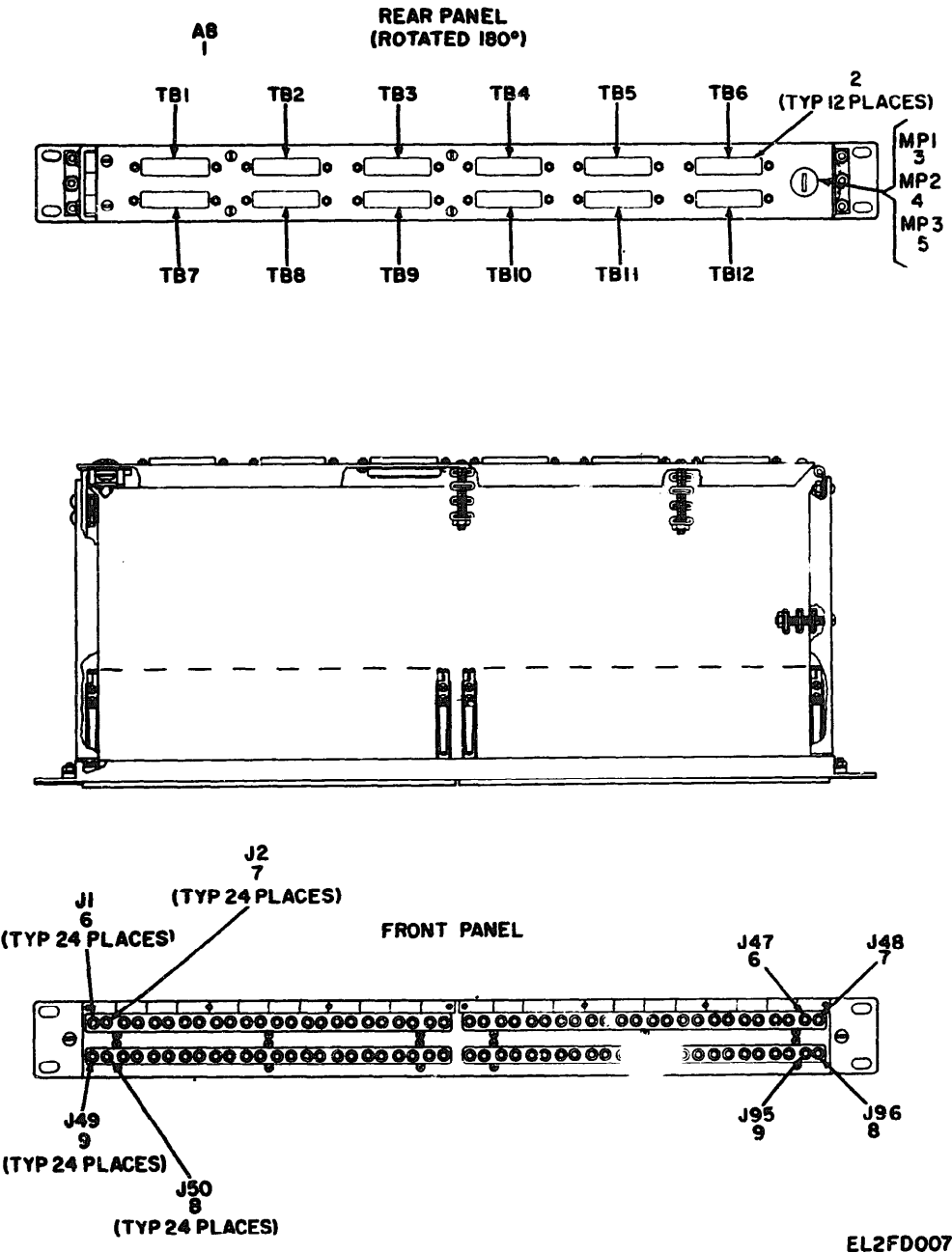
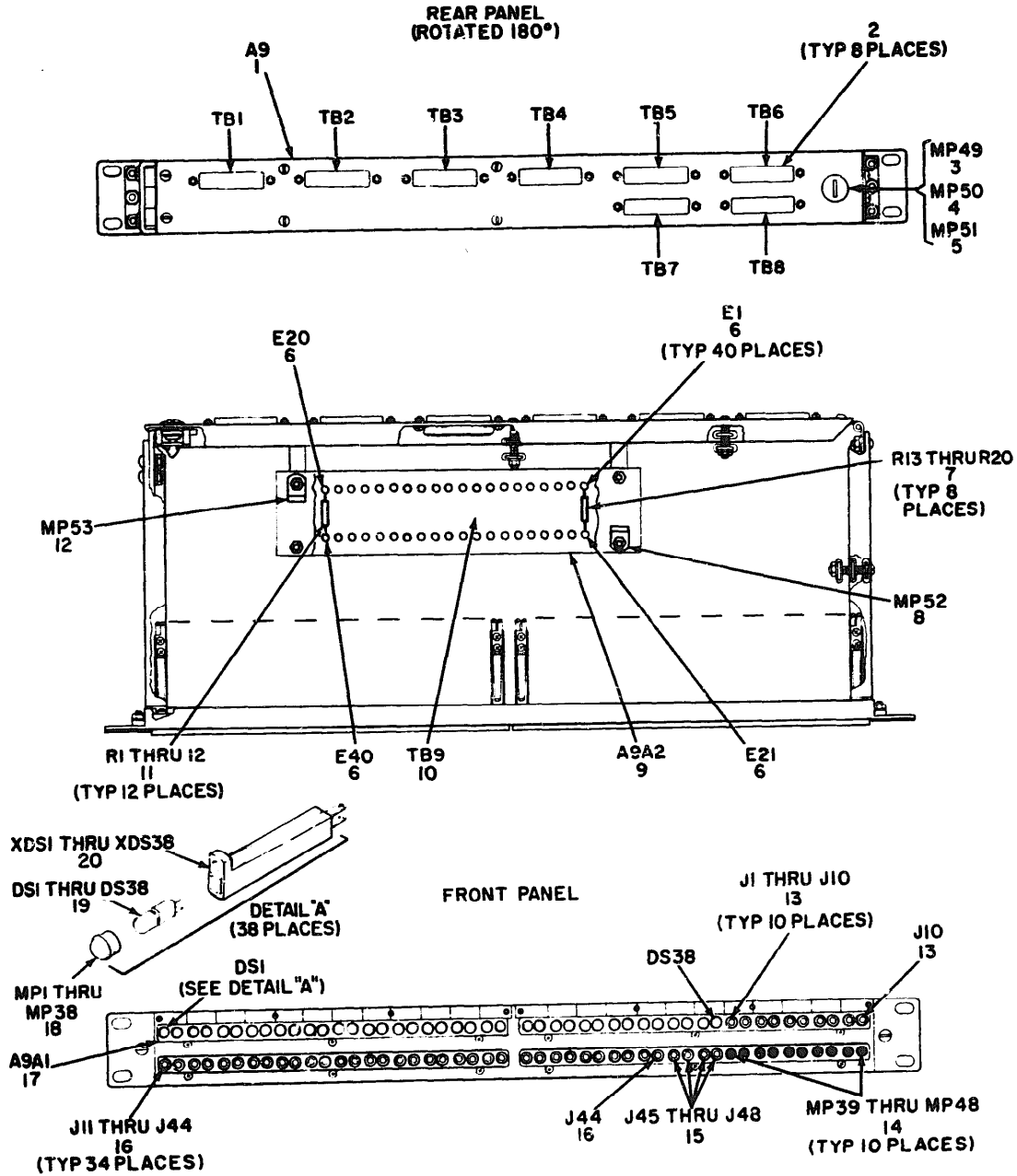


Figure 7. Sensor jack panel, D15777.

TM 11-5895-414-40P / NAVELEX 0967-LP-301-5670 / TO 3185-2FYQ42-224
REPAIR PARTS LIST (CONTINUED)

SECTION II

(1) ILLUS		(2)	(3)	(4)	(5)	(6)	(7)	(8)
(a) FIG. NO.	(b) ITEM NO.	SMR CODE	NATIONAL STOCK NUMBER	PART NUMBER	FSCM	DESCRIPTION	USEABLE ON CODE	UM QTY INC IN UNIT
						GROUP 08 SENSOR JACK PANEL		
7	1	XDHDD		015777	70674	JACK ASSEMBLY,TELEPHONE		EA 1
7	2	PAHZZ	5935-00-079-3172	17-18250	82660	CONNECTOR,RECEPTACLE,ELEC		EA 12
7	3	PAHZZ	5325-00-286-5898	5-8-228	94222	STUD,TURNLOCK FASTENER		EA 1
7	4	PAHZZ	5325-00-398-3351	85-47-101-15	94222	RECEPTACLE,TURNLOCK FASTENER		EA 1
7	5	PAHZZ	5365-00-720-6341	85-34-101-17	94222	RING,RETAINING		EA 1
7	6	PAHZZ	5935-00-877-2222	PJ839G	70674	JACK,TELEPHONE		EA 24
7	7	PAHZZ	5935-00-877-2217	PJ838G	70674	JACK,TELEPHONE		EA 24
7	8	PAHZZ	5935-00-877-2216	PJ824G	70674	JACK,TELEPHOHE		EA 24
7	9	PAHZZ	5935-00-877-2209	015928-2	70674	JACK,TELEPHONE		EA 24



EL2FD008

Figure 8. Miscellaneous jack panel, D15776.

TM 11-5895-414-40P / NAVELEX 0967-LP-301-5670 / TO 3185-2FYQ42-224
REPAIR PARTS LIST (CONTINUED)

SECTION II

(1) ILLUS		(2)	(3)	(4)	(5)	(6)	(7)	(8)
(a) FIG. NO.	(b) ITEM NO.	SMR CODE	NATIONAL STOCK NUMBER	PART NUMBER	FSCM	DESCRIPTION	USEABLE ON CODE	UM QTY INC IN UNIT
						GROUP 09 MISCELLANEOUS JACK PANEL, D15776		
8	1	KDHDD		015776	70674	JACK ASSEMBLY, TELEPHONE		EA 1
8	2	PANZZ	5935-00-079-3172	17-10250	02660	CONNECTOR, RECEPTACLE		EA 8
8	3	PANZZ	5325-00-286-5898	5-0-220	94222	STUD, TURNLOCK FASTENER		EA 1
8	4	PANZZ	5325-00-998-3351	05-47-101-15	94222	RECEPTACLE, TURNLOCK FASTENER		EA 1
8	5	PANZZ	5365-00-720-6341	05-34-101-17	94222	RING, RETAINING		EA 1
8	6	KDHZZ		1250C1	00245	TERMINAL, STUD		EA 40
8	7	PANZZ	5905-00-111-4743	RCR206020JS	01349	RESISTOR, FIXED, COMPOSITION		EA 8
8	8	PANZZ	5340-00-200-3036	771	03330	CLAMP, LOOP		EA 1
8	9	AHHMD		015946P2	70674	RESISTOR ASSEMBLY		EA 1
8	10	PANZZ	5940-00-077-2518	015946P1	70674	TERMINAL BOARD		EA 1
8	11	PANZZ	5905-00-141-1165	RCR206020JS	01349	RESISTOR, FIXED, COMPOSITION		EA 12
8	12	PANZZ	5340-00-827-6389	773	03330	CLAMP, LOOP		EA 1
8	13	PANZZ	5935-00-877-2217	PJ030C	70674	JACK, TELEPHONE		EA 10
8	14	PANZZ	5935-00-131-9667	PJ729B	70674	BUTTON, PLUG		EA 10
8	15	PANZZ	5935-00-877-2214	PJ005C	70674	JACK, TELEPHONE		EA 4
8	16	PANZZ	5935-00-877-2257	PJ041C	70674	JACK, TIP		EA 34
8	17	AHHMD		015319P9	70674	INSERT ASSEMBLY		EA 1
8	18	PANZZ	6218-00-075-0426	PJ723H	70674	LENS, INDICATOR LIGHT		EA 38
8	19	PANZZ	6240-00-073-5759	PJ060	70674	LAMP, INCANDESCENT		EA 38
8	20	PANZZ	6250-00-073-5828	PJ050	70674	LAMP HOLDER		EA 38

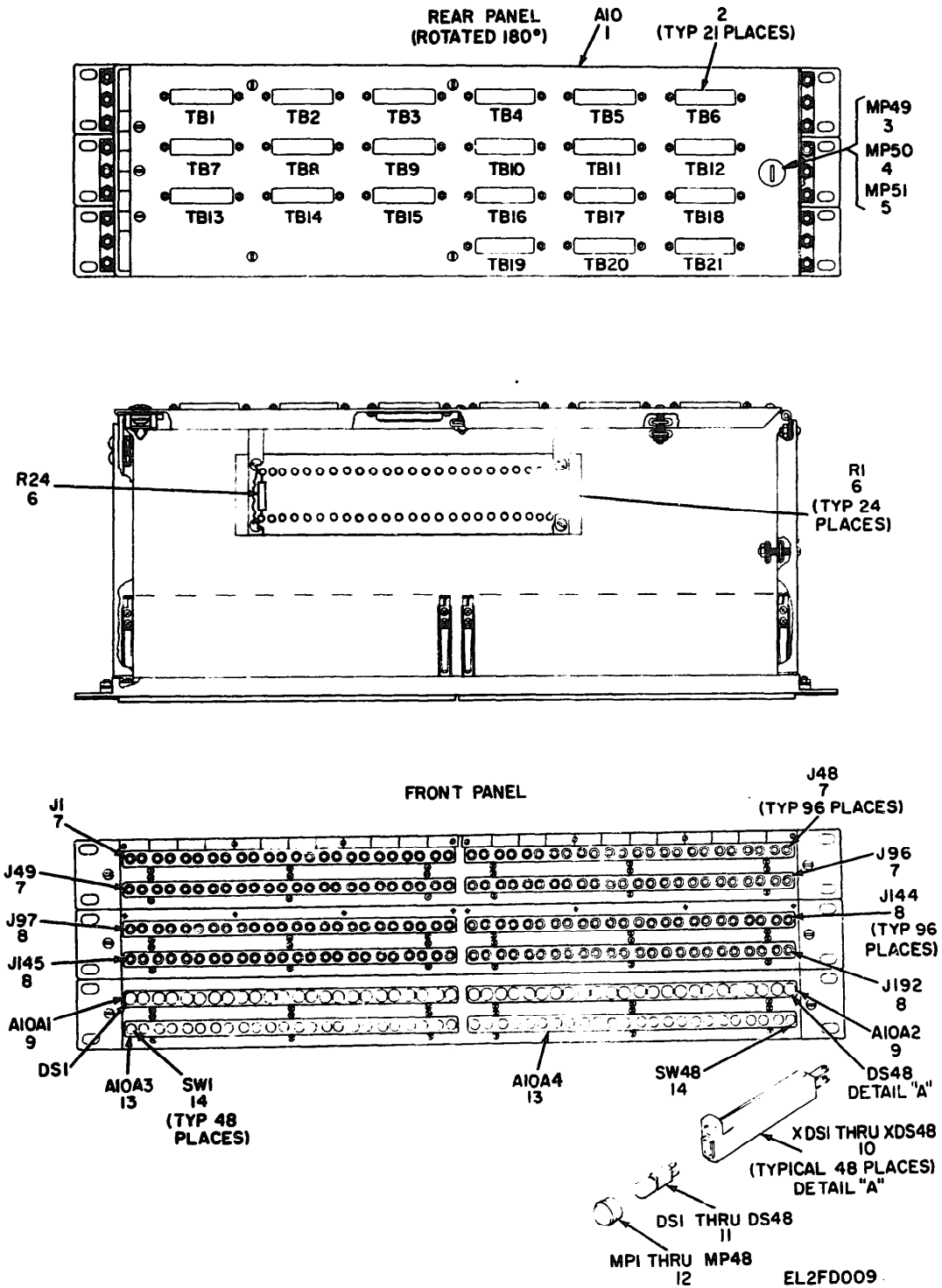
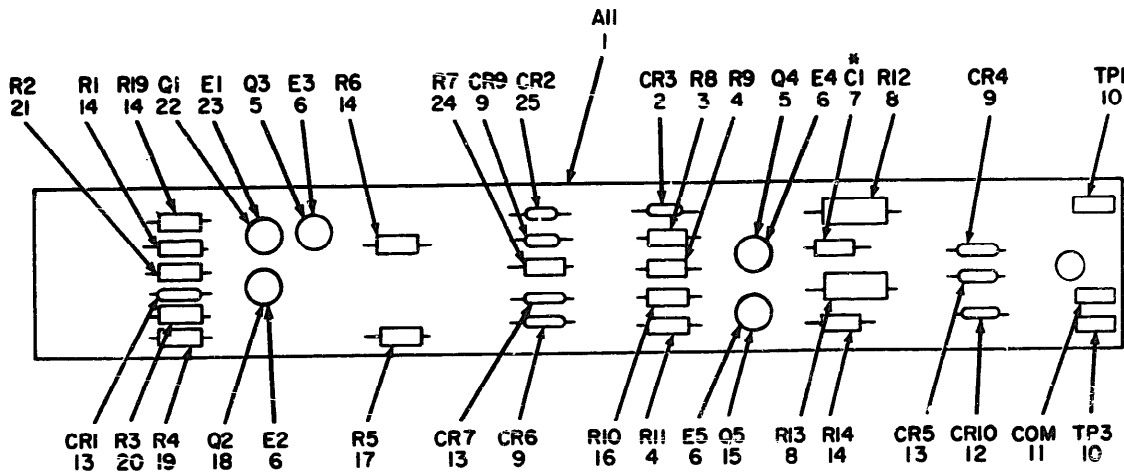


Figure 9. Line Jack panel, D15771.

TM 11-5895-414-40P / NAVELEX 0967-LP-301-5670 / TO 31S5-2FYQ42-224
REPAIR PARTS LIST (CONTINUED)

SECTION II

(1) ILLUS		(2)	(3)	(4)	(5)	(6)	(7)	(8)
(a) FIG. NO.	(b) ITEM NO.	SMR CODE	NATIONAL STOCK NUMBER	PART NUMBER	FSCM	DESCRIPTION	USEABLE ON CODE	UM QTY INC IN UNIT
						GROUP 10 LIME JACK PANEL, D15771		
9	1	XDHDD		015771	7067	JACK ASSEMBLY, TELEPHONE		EA 1
9	2	PAWZZ	5935-00-079-3172	17-10250	0266	CONNECTOR, RECEPTACLE, ELEC		EA 21
9	3	PAWZZ	5325-00-286-5898	5-0-220	9422	STUD, TURNLOCK FASTENER		EA 1
9	4	PAWZZ	5325-00-998-3351	85-47-101-15	9422	RECEPTACLE, TURNLOCK FASTENER		EA 1
9	5	PAWZZ	5365-00-720-6341	85-34-101-17	9422	RING, RETAINING		EA 1
9	6	PAWZZ	5905-00-111-4743	RCR206820JS	8134	RESISTOR, FIXED, COMPOSITION		EA 24
9	7	PAWZZ	5935-00-877-2211	PJ830G	7067	JACK, TELEPHONE		EA 96
9	8	PAWZZ	5935-00-877-2216	PJ824G	7067	JACK, TELEPHONE		EA 96
9	9	AHHHD		015319P9	7067	INSERT ASSEMBLY		EA 2
9	10	PAWZZ	6258-00-073-5828	PJ550	7067	LAMP HOLDER		EA 48
9	11	PAWZZ	6240-00-073-5759	PJ860	7067	LAMP, INCANDESCENT		EA 48
9	12	PAWZZ	6210-00-075-0426	PJ729W	7857	LENS, INDICATOR LIGHT		EA 48
9	13	AHHHD		015319P10	7067	INSERT ASSEMBLY		EA 2
9	14	PAWZZ	5930-00-826-1305	015941-2	7067	SWITCH, PUSH-PULL		EA 48



*NOTE: ITEM 7, CAPACITOR C1, IS SELECT AT TEST ITEM.
REFER TO REPAIR PARTS LIST FOR REQUIRED CAPACITORS.

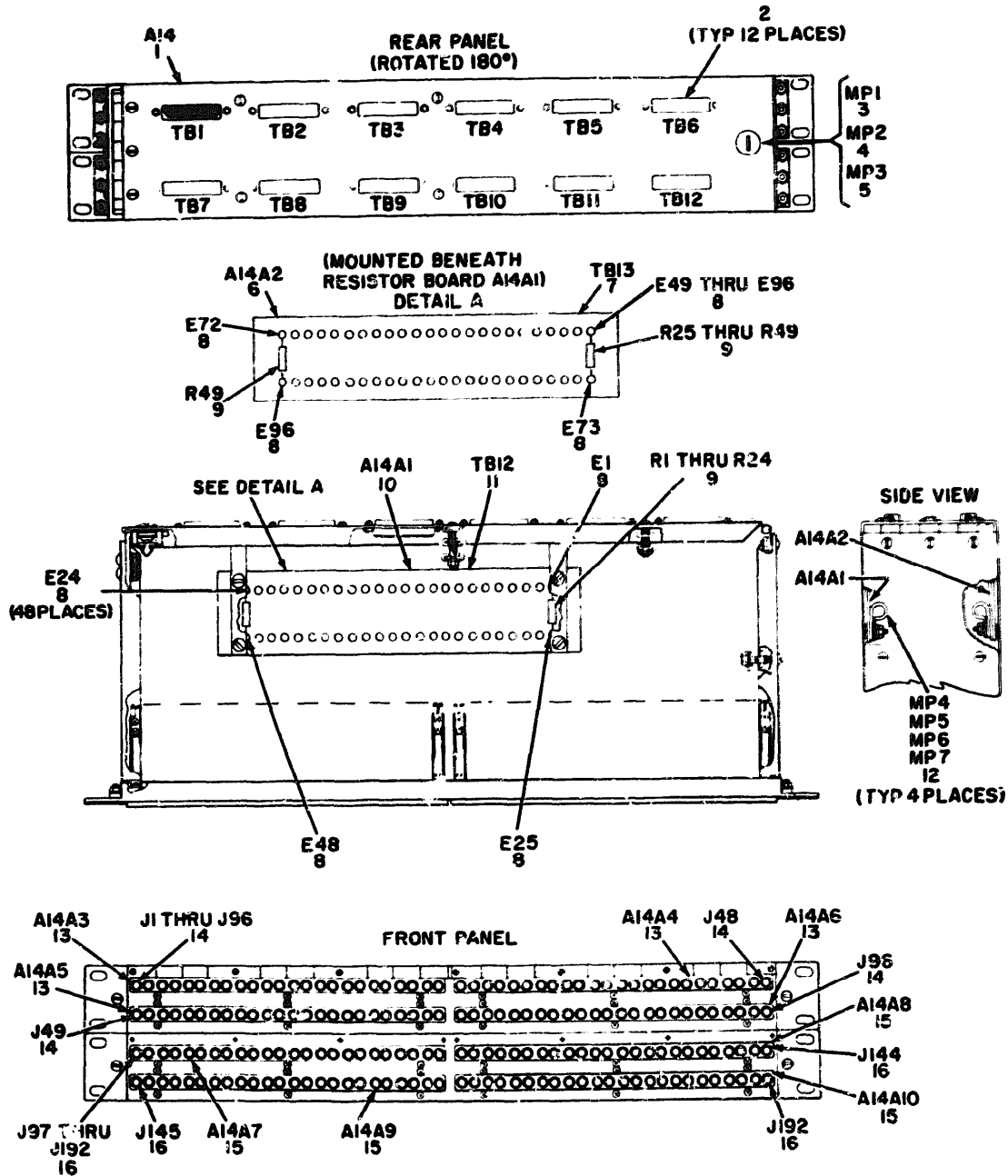
EL2F0010

Figure 10. Red line driver, 14242.

TM 11-5895-414-40P / NAVELEX 0967-LP-301-5670 / TO 31S5-2FYQ42-224
REPAIR PARTS LIST (CONTINUED)

SECTION II

(1) ILLUS		(2)	(3)	(4)	(5)	(6)	(7)	(8)
(a) FIG. NO.	(b) ITEM NO.	SMR CODE	NATIONAL STOCK NUMBER	PART NUMBER	FSCM	DESCRIPTION	USEABLE ON CODE	UM INC IN UNIT
						GROUP 14 RED LINE DRIVER		
10	1	PANND	5895-88-168-1765	14242	86964	CIRCUIT CARD ASSEMBLY		EA 1
10	2	PANZZ	5961-88-183-4884	981884	86964	SEMICONDUCTOR DEVICE,DIODE		EA 1
10	3	PANZZ	5985-88-141-8595	RCR286472JS	81349	RESISTOR,FIXED,COMPOSITION		EA 1
10	4	PANZZ	5985-88-141-1138	RCR286272JS	81349	RESISTOR,FIXED,COMPOSITION		EA 2
10	5	PANZZ	5961-88-981-4662	2N3638	88131	TRANSISTOR		EA 2
10	6	PANZZ	5961-88-884-9864	1888-158	86964	INSULATOR,DISK		EA 4
10	7	PANZZ	5918-88-725-4795	CM28F0102603	81349	CAPACITOR,FIXED,MICA		EA 1
10	7	PANZZ	5918-88-765-6316	CM38F0122603	81349	-OR- CAPACITOR,FIXED,MICA		EA 1
10	7	PANZZ	5918-88-727-4885	CM38F0152603	81349	-OR- CAPACITOR,FIXED,MICA		EA 1
10	7	PANZZ	5918-00-765-6314	CM38F0102603	81349	-OR- CAPACITOR,FIXED,MICA		EA 1
10	7	PANZZ	5918-88-712-6178	CM38F0282603	81349	-OR- CAPACITOR,FIXED,MICA		EA 1
10	7	PANZZ	5918-88-724-6879	CM38F0222603	81349	-OR- CAPACITOR,FIXED,MICA		EA 1
10	7	PANZZ	5918-88-913-1189	CM38F0242603	81349	-OR- CAPACITOR,FIXED,MICA		EA 1
10	8	PANZZ	5985-88-121-9861	RCR326182JS	81349	RESISTOR,FIXED,COMPOSITION		EA 2
10	9	PANZZ	5961-00-542-7291	JAN1N658	81349	SEMICONDUCTOR DEVICE,DIODE		EA 3
10	10	PANZZ	5935-88-827-8887	1194378	78947	JACK,TIP		EA 2
10	11	PANZZ	5935-00-755-3428	119437C	78947	JACK,TIP		EA 1
10	12	PANZZ	5961-00-940-8567	1N277	81349	SEMICONDUCTOR DEVICE,DIODE		EA 1
10	13	PANZZ	5961-00-995-2310	JAN1N752A	81349	SEMICONDUCTOR DEVICE, DIODE		EA 3
10	14	PANZZ	5985-88-141-8591	RCR286183JS	81349	RESISTOR,FIXED,COMPOSITION		EA 4
10	15	PANZZ	5961-88-938-5325	2N3565	88131	TRANSISTOR		EA 1
10	16	PANZZ	5985-88-184-8348	RCR286332JS	81349	RESISTOR,FIXED,COMPOSITION		EA 1
10	17	PANZZ	5985-88-141-8688	RCR286822JS	81349	RESISTOR,FIXED,COMPOSITION		EA 1
10	18	PANZZ	5961-00-752-5229	2N484	81349	TRANSISTOR		EA 1
10	19	PANZZ	5985-88-186-9351	RCR286273JS	81349	RESISTOR,FIXED,COMPOSITION		EA 1
10	20	PANZZ	5985-88-141-1168	RCR286222JS	81349	RESISTOR,FIXED,COMPOSITION		EA 1
10	21	PANZZ	5985-88-114-5398	RCR286225JS	81349	RESISTOR,FIXED,COMPOSITION		EA 1
10	22	PANZZ	5961-88-183-4886	988815	86964	TRANSISTOR		EA 1
10	23	PANZZ	5948-88-475-2813	1881	21968	INSULATOR,DISK		EA 1
10	24	PANZZ	5985-88-184-8336	RCR286184JS	81349	RESISTOR,FIXED,COMPOSITION		EA 1
10	25	PANZZ	5961-00-821-2315	1N787A	88131	SEMICONDUCTOR DEVICE,DIODE		EA 1

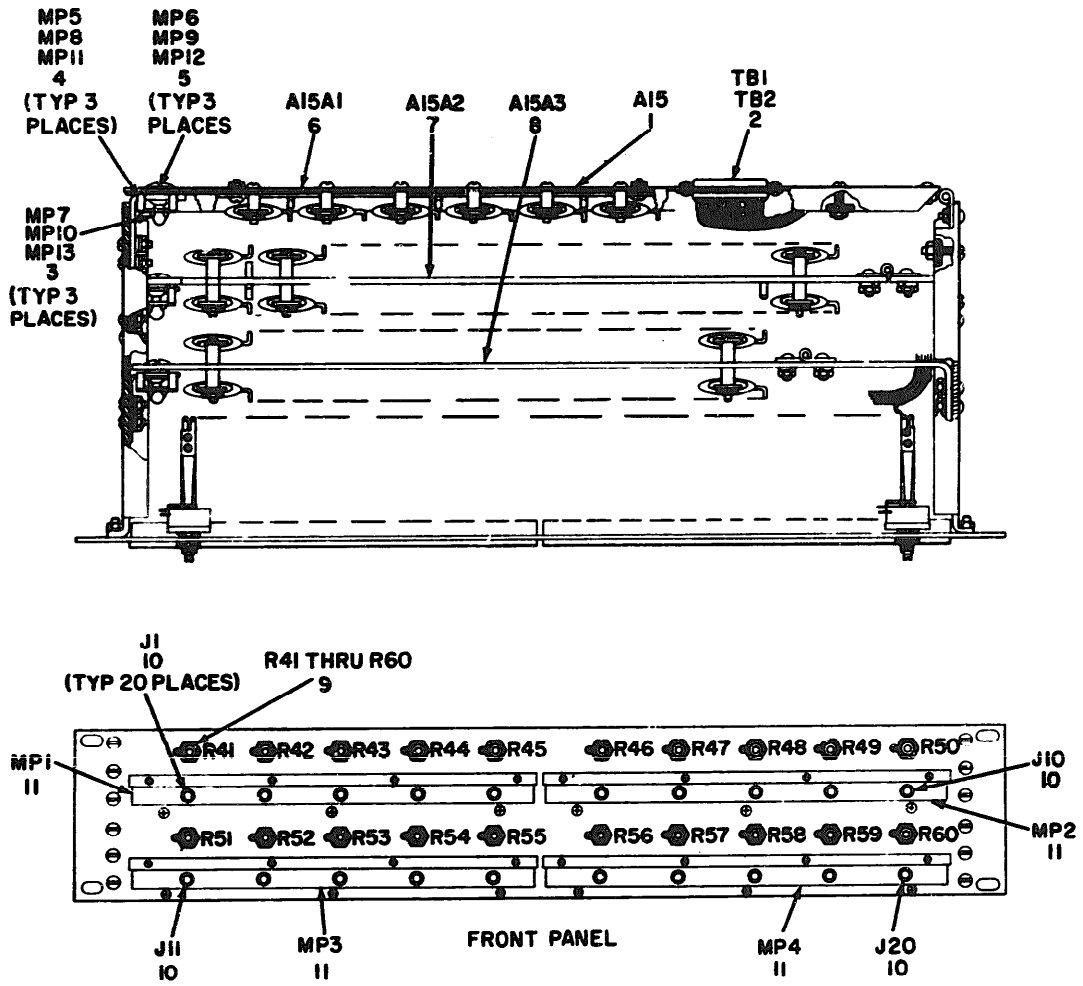


EL2FD011

Figure 11. DC patch panel, DI5773.

TM 11-5895-414-40P / NAVELEX 0967-LP-301-5670 / TO 3185-2FYQ42-224
REPAIR PARTS LIST (CONTINUED)

(1) ILLUS		(2)	(3)	(4)	(5)	(6)	(7)	(8)	
(a) FIG. NO.	(b) ITEM NO.	SMR CODE	NATIONAL STOCK NUMBER	PART NUMBER	FSCM	DESCRIPTION	USEABLE ON CODE	UM	QTY INC IN UNIT
						GROUP 17 OC PATCH PANEL			
11	1	KDHDD		115773	70674	JACK ASSEMBLY, TELEPHONE		EA	1
11	2	PAWZZ	5935-00-079-3172	17-18250	82660	CONNECTOR, RECEPTACLE, ELEC		EA	12
11	3	PAWZZ	5325-00-286-5898	1-0-220	94222	STUD, TURNLOCK FASTENER		EA	1
11	4	PAWZZ	5325-00-998-3351	15-47-101-15	94222	RECEPTACLE, TURNLOCK FASTENER		EA	1
11	5	PAWZZ	5365-00-720-6341	15-34-101-17	94222	RING, RETAINING		EA	1
11	6	AHHMD		115976P4	70674	RESISTOR ASSEMBLY		EA	1
11	7	PAWZZ	5940-00-072-0849	115976P2	70674	TERMINAL BOARD		EA	1
11	8	PAWZZ	5940-00-271-8641	125081	88245	TERMINAL, STUD		EA	96
11	9	PAWZZ	5905-00-186-9344	RCR20G101JS	81349	RESISTOR, FIXED, COMPOSITION		EA	48
11	10	AHHMD		115976P3	70674	RESISTOR ASSEMBLY		EA	1
11	11	PAWZZ	5940-00-071-6297	115976P1	70674	TERMINAL BOARD		EA	1
11	12	PAWZZ	5340-00-827-6389	173	83330	CLAMP, LOOP		EA	4
11	13	AHHMD		115319P3	70674	INSERT ASSEMBLY		EA	4
11	14	PAWZZ	5935-00-909-5682	PJ838	70674	JACK, TELEPHONE		EA	96
11	15	AHHMD		115319P2	70674	INSERT ASSEMBLY		EA	4
11	16	PAWZZ	5935-00-905-6407	PJ839	70674	JACK, TELEPHONE		EA	96

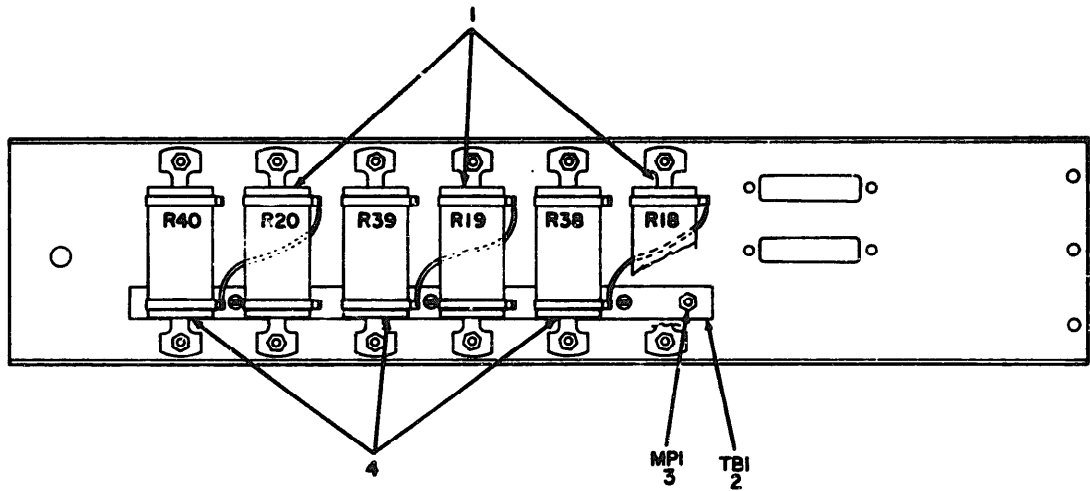


EL2FD012

Figure 12. Loop resistance panel, D15780.

SECTION II

(1) ILLUS		(2)	(3)	(4)	(5)	(6)	(7)	(8)
(A) FIG. NO.	(B) ITEM NO.	SMR CODE	NATIONAL STOCK NUMBER	PART NUMBER	FSCM	DESCRIPTION	USEABLE ON CODE	QTY INC IN UNIT
						GROUP 18 LOOP RESISTANCE PANEL		
12	1	KDHDD		D15768	78674	LOOP RESISTANCE PANEL		EA 1
12	2	PANZZ	5935-00-079-3172	17-18258	82668	CONNECTOR, RECEPTACLE, ELEC		EA 2
12	3	PANZZ	5365-00-720-6341	85-34-101-17	94222	RING, RETAINING		EA 3
12	4	PANZZ	5325-00-998-3351	85-47-101-15	94222	RECEPTACLE, TURNLOCK FASTENER		EA 3
12	5	PANZZ	5325-00-286-5898	9-8-228	94222	STUD, TURNLOCK FASTENER		EA 3
12	6	AHMH0		D15982	78674	RESISTOR ASSEMBLY		EA 1
12	7	AHMH0		D15981	78674	RESISTOR ASSEMBLY		EA 1
12	8	AHMH0		D15980	78674	RESISTOR ASSEMBLY		EA 1
12	9	PAN7Z	5905-00-924-6676	RP06108252KK	81349	RESISTOR, VARIABLE		EA 20
12	10	PANZZ	5935-00-905-6407	PJ639	78674	JACK, TELEPHONE		EA 20
12	11	KDHZZ		D15968	78674	INSERT, PANEL, SPECIAL		EA 4



EL2FD013

Figure 13. Resistor assembly, D15982.

TM 11-5895-414-40P / NAVELEX 0967-LP-301-5670 / TO 31S5-2FYQ42-224
 REPAIR PARTS LIST (CONTINUED)

SECTION II

(1) ILLUS		(2)	(3)	(4)	(5)	(6)	(7)	(8)	
(a) FIG. NO.	(b) ITEM NO.	SMR CODE	NATIONAL STOCK NUMBER	PART NUMBER	FSCM	DESCRIPTION	USEABLE ON CODE	UM	QTY INC IN UNIT
13	1	PAHZZ	5905-00-577-0461	RW21V102	81349	RESISTOR, FIXED, WIREWOUND		EA	3
13	2	PAHZZ	5940-00-072-0838	015903P2	70674	TERMINAL BOARD		EA	1
13	3	KDHZZ		015903P3	70674	SPACER		EA	1
13	4	PAHZZ	5905-00-601-0566	RW21V202	81349	RESISTOR, FIXED, WIREWOUND		EA	3

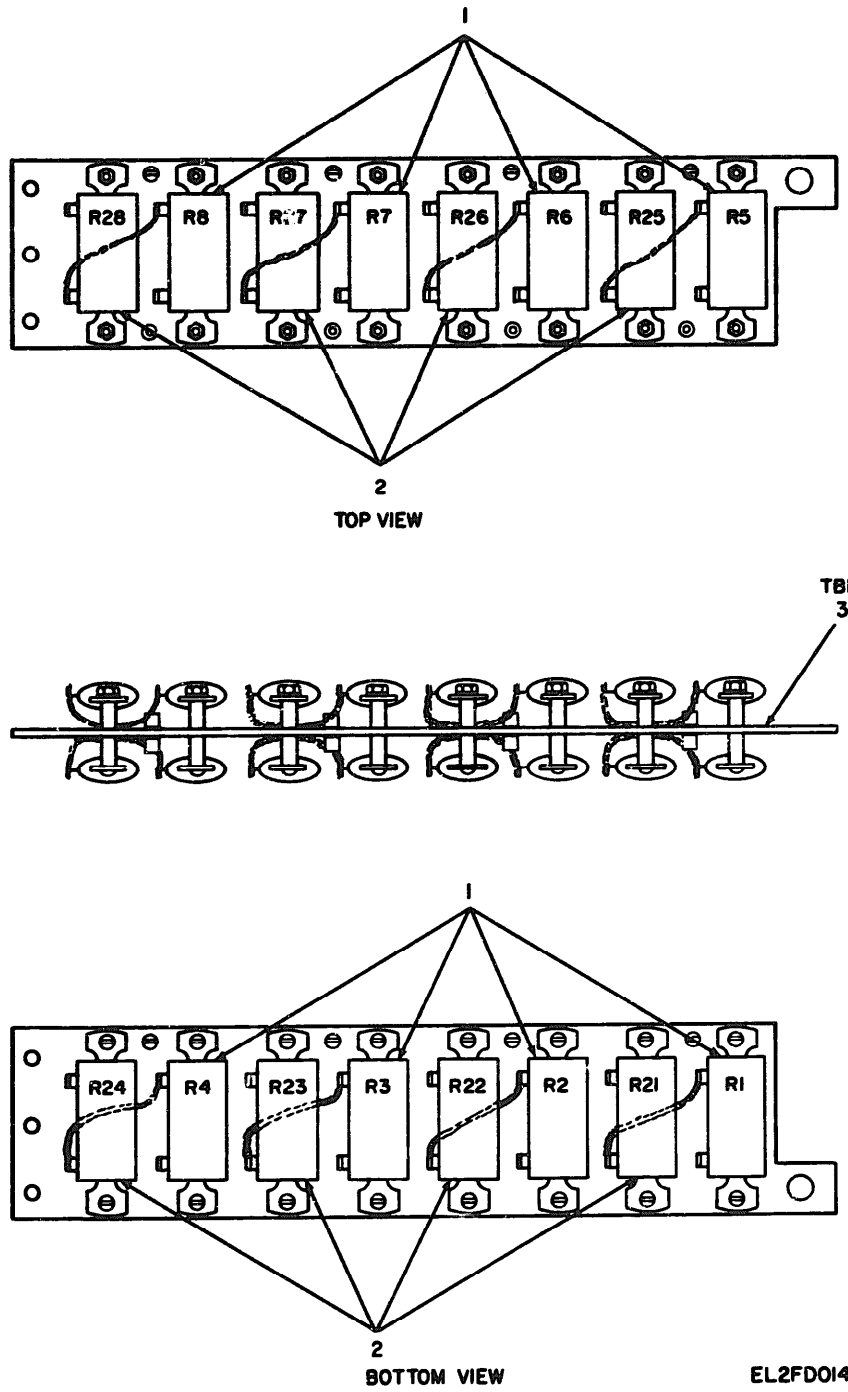


Figure 14. Resistor assembly, D15980.

SECTION II

REPAIR PARTS LIST (CONTINUED)

(1) CLASS		(2) NSM CODE	(3) NATIONAL STOCK NUMBER	(4) PART NUMBER	(5) FCM	(6) DESCRIPTION	USEABLE ON CODE	(7) UM	(8) QTY INC IN UNIT
(a) FPL NO.	(b) ITEM NO.								
14	1	PAWZZ	5905-00-601-0566	RN21V202	01349	RESISTOR, FIXED, WIREWOUND		EA	8
14	2	PAWZZ	5905-00-577-0461	RN21V102	01349	RESISTOR, FIXED, WIREWOUND		EA	8
14	3	ADMZZ		015966P2	70674	TERMINAL BOARD		EA	1

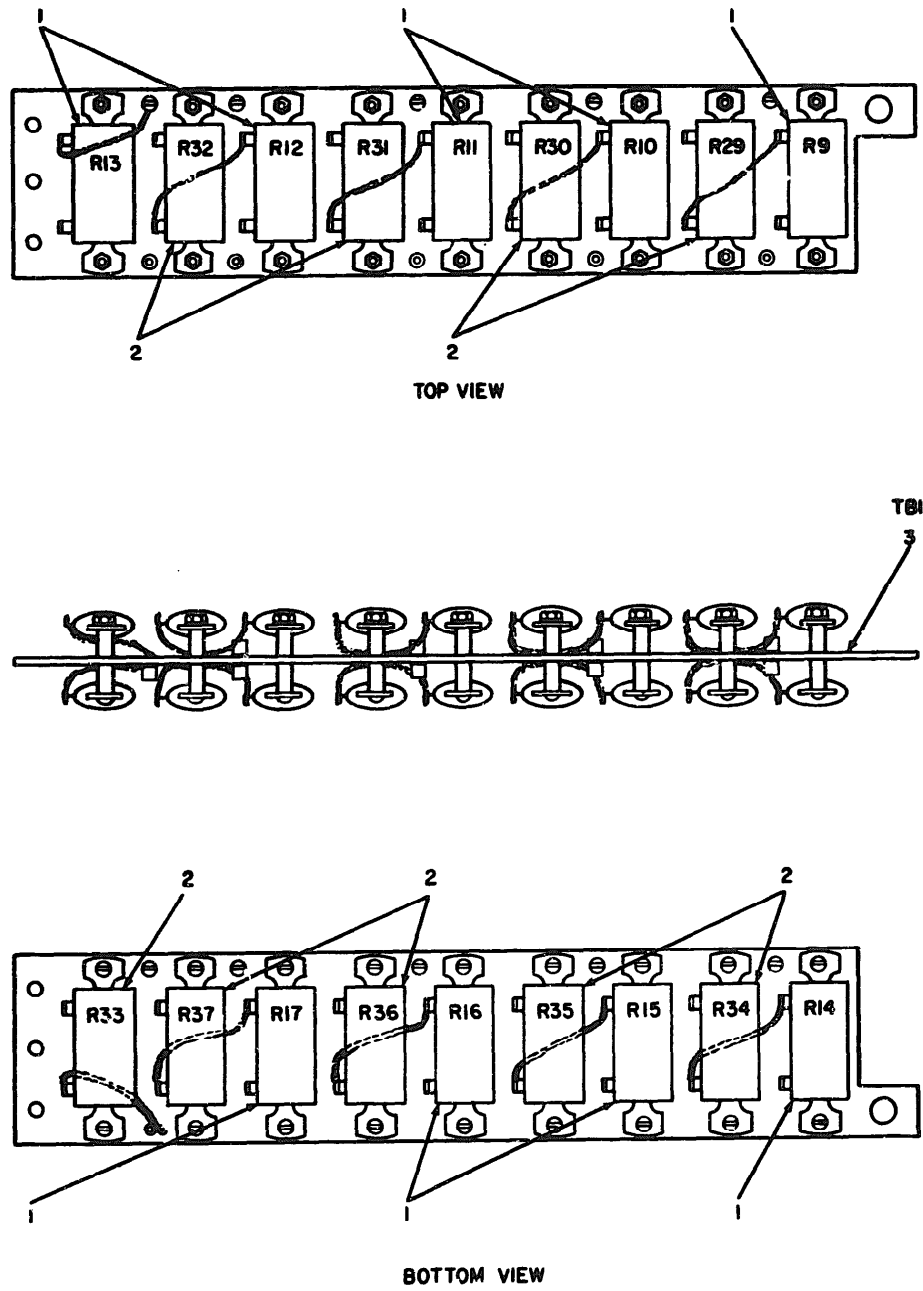
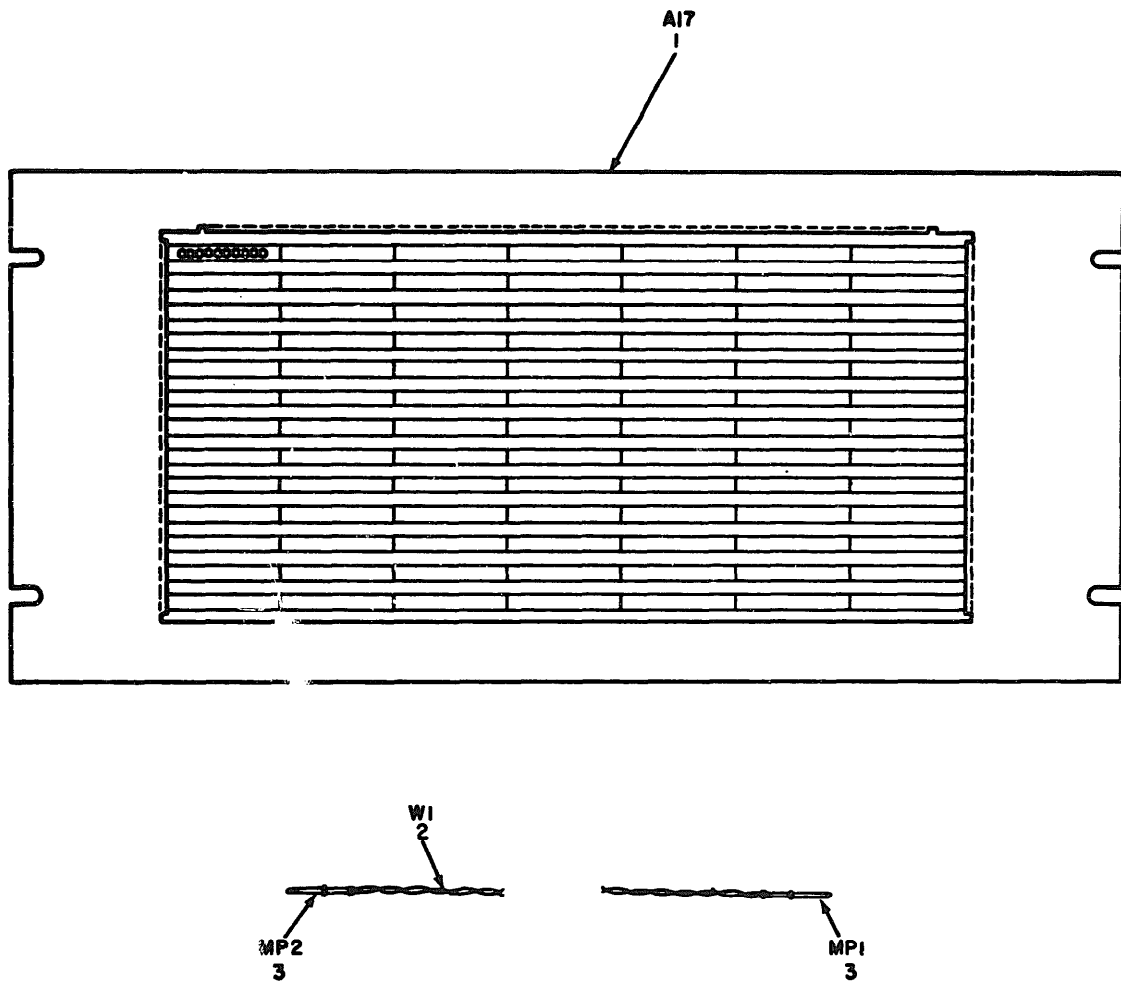


Figure 15. Resistor assembly, D15981.

SECTION II

REPAIR PARTS LIST (CONTINUED)

(1) NAME		(2) SMR CODE	(3) NATIONAL STOCK NUMBER	(4) PART NUMBER	(5) FCM	(6) DESCRIPTION	USEABLE ON CODE	(7) UM	(8) QTY INC IN UNIT
(a) FPL NO.	(b) ITEM NO.								
15	1	PANZZ	5905-00-577-0461	RN21V102	01349	RESISTOR, FIXED, WIREWOUND		EA	9
15	2	PANZZ	5905-00-601-0566	RN21V202	01349	RESISTOR, FIXED, WIREWOUND		EA	9
15	3	PANZZ	5940-00-089-7896	D19067P2	70674	TERMINAL BOARD		EA	1



EL2FD016

Figure 16. Taper pin panel, 398-10208-1.

SECTION II

(1) ILLUSTRATION		(2)	(3)	(4)	(5)	(6)	(7)	(8)	
(a) FIG. NO.	(b) ITEM NO.	SMR CODE	NATIONAL STOCK NUMBER	PART NUMBER	PSCN	DESCRIPTION	USEABLE ON CODE	UM	QTY INC IN UNIT
						GROUP 20 TAPER PIN PANEL			
16	1	KDHDD		390-10200-1	66059	TAPER PIN PANEL		EA	1
16	2	KDHZZ		990BRN/TAN	90464	WIRE, ELECTRICAL		EA	1
16	3	PAWZZ	5940-00-871-7334	66199-3	00779	TAPER PIN		EA	2

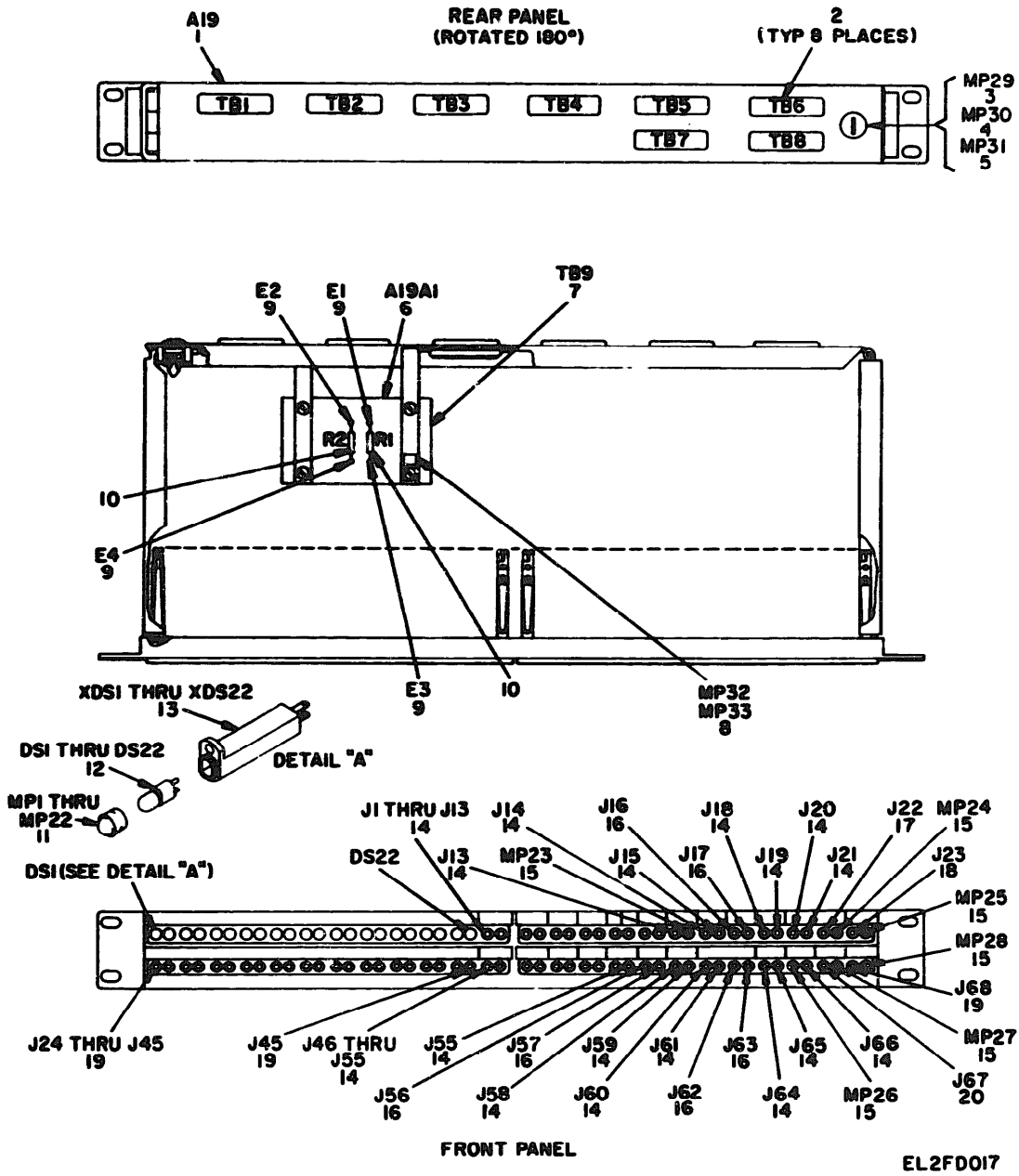
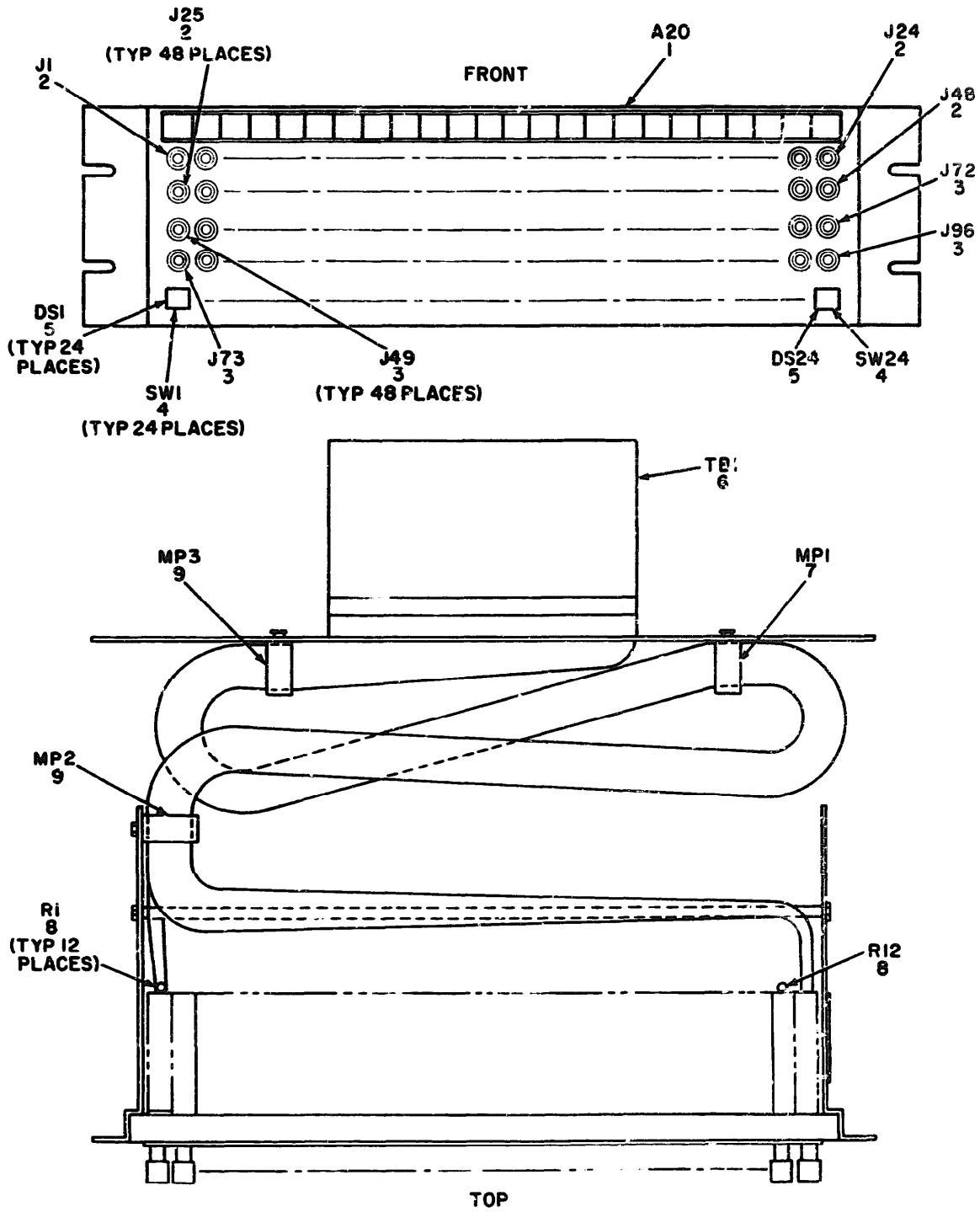


Figure 17. Miscellaneous jack panel, D15772.

TM 11-5895-414-40P / NAVELEX 0967-LP-301-5670 / TO 31S5-2FYQ42-224
REPAIR PARTS LIST (CONTINUED)

SECTION II

(1) ILLUS		(2)	(3)	(4)	(5)	(6)	(7)	(8)	
(a) FIG. NO.	(b) ITEM NO.	SMR CODE	NATIONAL STOCK NUMBER	PART NUMBER	FSCM	DESCRIPTION	USEABLE ON CODE	UM	QTY INC IN UNIT
						GROUP 22 MISCELLANEOUS JACK PANEL, D15772			
17	1	KDHDD		015772	70674	JACK ASSEMBLY,TELEPHONE		EA	1
17	2	PANZZ	5935-00-079-3172	17-10290	02660	CONNECTOR,RECEPTACLE,ELEC		EA	8
17	3	PANZZ	5325-00-286-5898	5-0-220	94222	STUD, TURNLOCK FASTENER		EA	1
17	4	PANZZ	5325-00-998-3351	05-47-101-15	94222	RECEPTACLE,TURNLOCK FASTENER		EA	1
17	5	PANZZ	5365-00-720-6341	05-34-101-17	94222	RING,RETAINING		EA	1
17	6	ANMHD		015940P1	70674	RESISTOR ASSEMBLY		EA	1
17	7	PANZZ		015940P6	70674	TERMINAL BOARD		EA	1
17	8	PANZZ	5340-00-200-3036	771	03330	CLAMP,LOOP		EA	2
17	9	KDHZZ		1250C1	00245	TERMINAL,STUD		EA	4
17	10	PANZZ	5905-00-304-8347	RCR32G101JS	01349	RESISTOR,FIXED,COMPOSITION		EA	2
17	11	PANZZ	6210-00-075-0426	PJ729H	70674	LENS,INDICATOR LIGHT		EA	22
17	12	PANZZ	6240-00-073-5759	PJ060	70674	LAMP,INCANDESCENT		EA	22
17	13	PANZZ	6250-00-873-5828	PJ050	70674	LAMPHOLDER		EA	22
17	14	PANZZ	5935-00-909-5682	PJ030	70674	JACK,TELEPHONE		EA	36
17	15	PANZZ	5935-00-131-9667	PJ729B	70674	BUTTON,PLUG		EA	5
17	16	PANZZ	5935-00-905-6407	PJ039	70674	JACK,TELEPHONE		EA	6
17	17	PANZZ	5935-00-877-2210	015909-1	70674	JACK,TELEPHONE		EA	1
17	18	PANZZ	5935-00-877-2212	015991-1	70674	JACK,TELEPHONE		EA	1
17	19	PANZZ	5935-00-877-2228	PJ041	70674	JACK,TIP		EA	23
17	20	PANZZ	5935-00-877-2211	015990-1	70674	JACK,TELEPHONE		EA	1



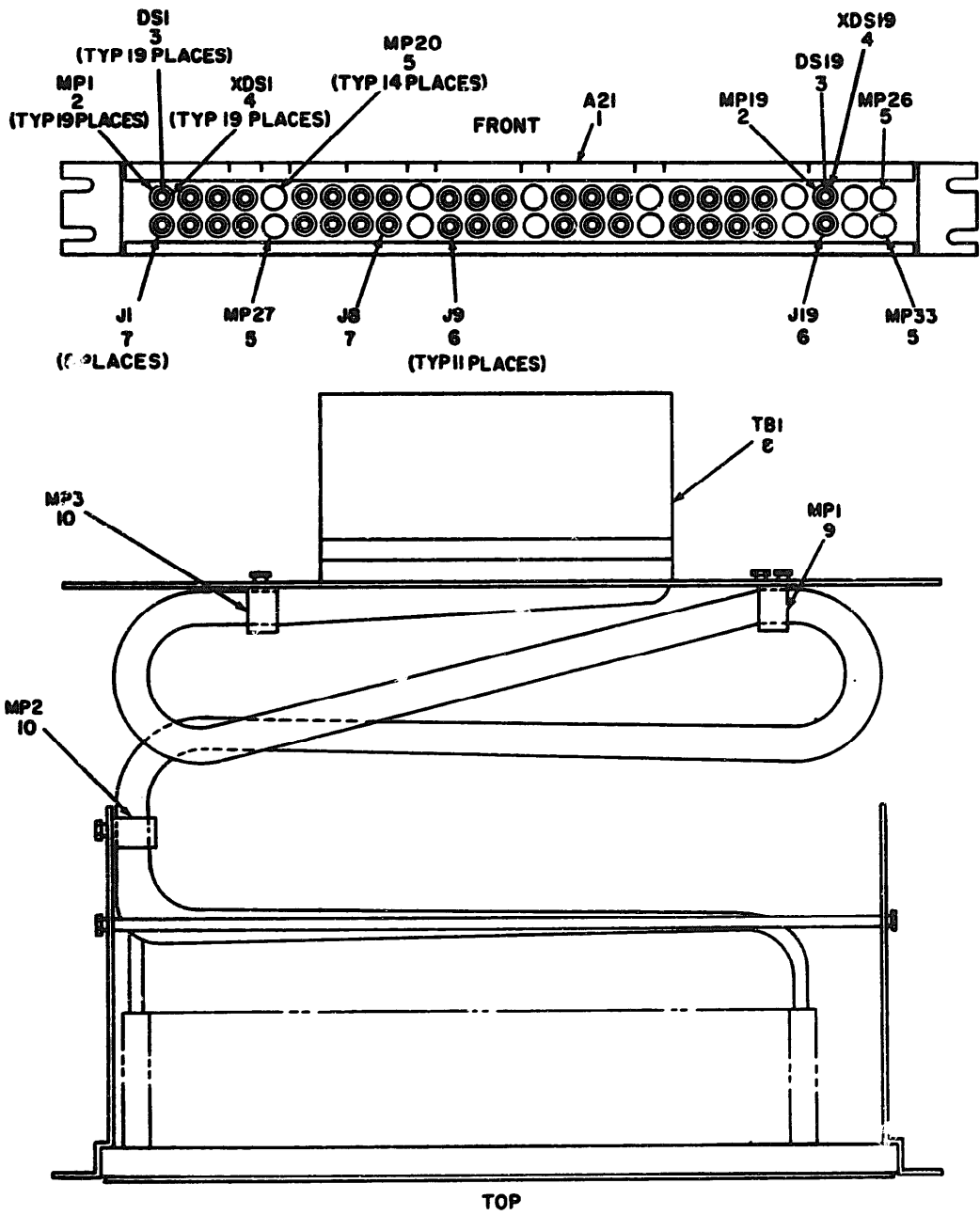
EL2FD018

Figure 18. Line jack panel, 100003047-001.

TM 11-5895-414-40P / NAVELEX 0967-LP-301-5670 / TO 31SS-2FYQ42-224
REPAIR PARTS LIST (CONTINUED)

SECTION II

(1) ILLUS		(2)	(3)	(4)	(5)	(6)	(7)	(8)	
(a) FIG. NO.	(b) ITEM NO.	SMR CODE	NATIONAL STOCK NUMBER	PART NUMBER	FSCM	DESCRIPTION	USEABLE ON CODE	UM	QTY INC IN UNIT
						GROUP 23 LIKE JACK PANEL, 100003047-001			
18	1	KDHDD		100003047-001	95692	LINE JACK PANEL		EA	1
18	2	PANZZ	5965-00-192-4825	JJ022	81349	JACK, TELEPHONE		EA	48
18	3	KDHZZ		CMT336A	82309	JACK, TELEPHONE		EA	48
18	4	PANZZ	5930-00-166-3447	23000022	95692	SWITCH, PUSH		EA	24
18	5	KDHZZ		345	00000	LAMP, GLOW		EA	24
18	6	PANZZ	5940-00-627-0581	130-1230	71600	TERMINAL BOARD		EA	1
18	7	KDHZZ		100-225-13-4	99379	CLIP, RETAINING		EA	1
18	8	PANZZ	5905-00-111-4743	RCR20G020JS	81349	RESISTOR, FIXED, COMPOSITION		EA	12
18	9	KDHZZ		MS21104HD14	96906	CLAMP, LOOP		EA	2



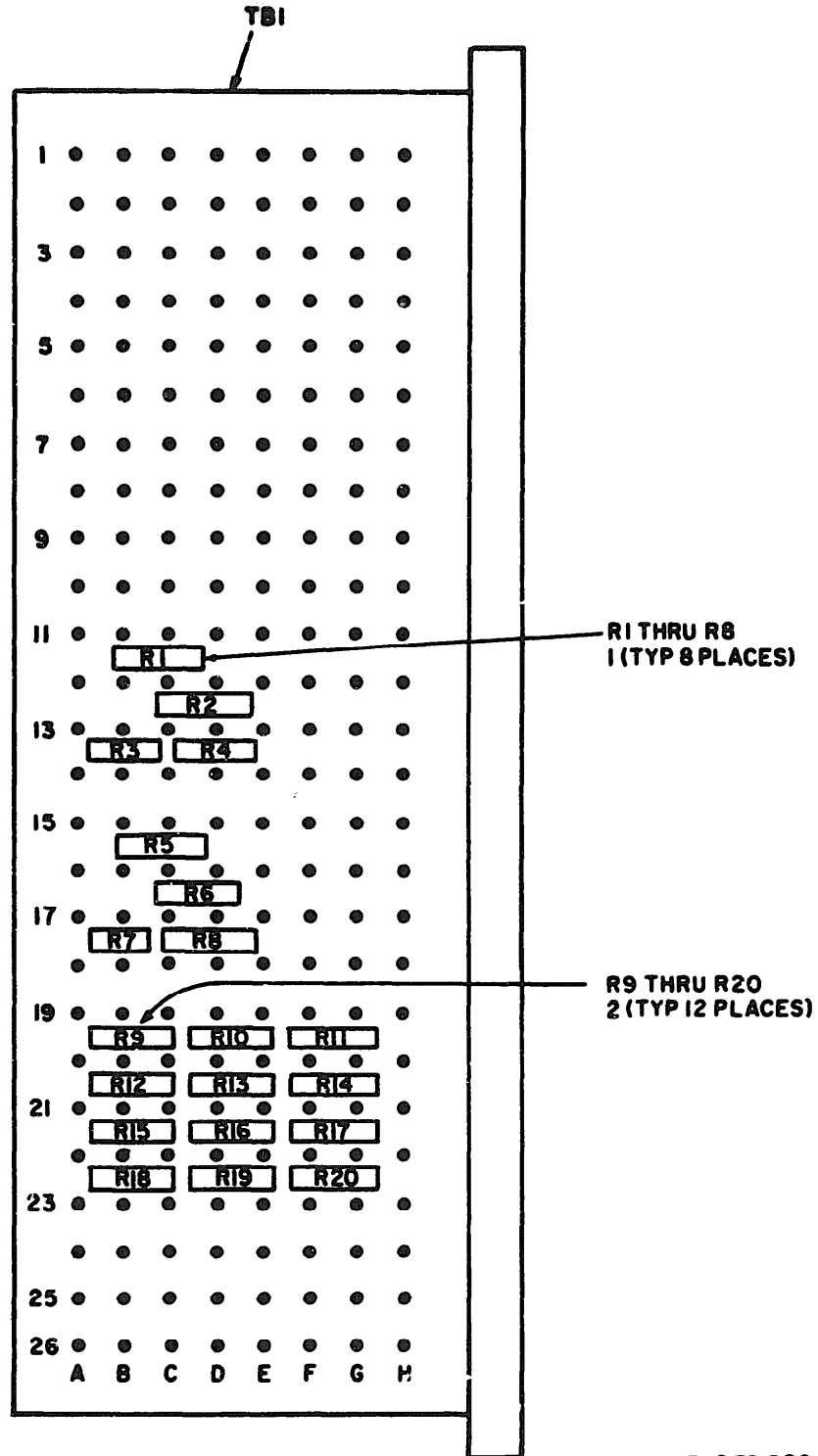
EL2FD019

Figure 19. Miscellaneous jack panel, 100003047-002.

TM 11-5895-414-40P / NAVELEX 0967-LP-301-5670 / TO 3185-2FYQ42-224
 REPAIR PARTS LIST (CONTINUED)

SECTION II

(1) ILLUS		(2) SMR CODE	(3) NATIONAL STOCK NUMBER	(4) PART NUMBER	(5) F8CM	(6) DESCRIPTION	(7) USEABLE ON CODE	(8) UM	(9) QTY INC IN UNIT
(a) FIG. NO.	(b) ITEM NO.								
						GROUP 24 MISCELLANEOUS JACK PANEL, 100003047-002			
19	1	KDHDD		100003047-002	95692	MISCELLANEOUS JACK PANEL		EA	1
19	2	PAMZZ	6210-00-419-8389	402-0137-100	72619	CAP, LENS		EA	19
19	3	PAMZZ	6240-00-486-8447	6C2	08006	LAMP, INCANDESCENT		EA	19
19	4	PAMZZ	6250-00-186-6410	LT67	02309	LAMP HOLDER		EA	19
19	5	PAMZZ	5348-00-194-4827	P1001	02309	BUTTON, PLUG		EA	14
19	6	PAMZZ	5935-00-234-2100	JJ074	01349	JACK, TELEPHONE		EA	11
19	7	PAMZZ	5935-00-760-6417	CHT336C	02309	JACK, TELEPHONE		EA	8
19	8	PAMZZ	5940-00-838-2444	130-1220	71600	TERMINAL BOARD		EA	1
19	9	KDHZZ		100-225-10A1	99370	CLIP, RETAINING		EA	1
19	10	KDHZZ		MS25201-10	96906	CLAMP, LOOP		EA	2



EL2FD020

Figure 20. Terminal board, 130-1228.

(1) ILLUSTRATION		(2)	(3)	(4)	(5)	(6)	(7)	(8)
(a) FIG. NO.	(b) ITEM NO.	QSR CODE	NATIONAL STOCK NUMBER	PART NUMBER	FSCM	DESCRIPTION	USEABLE ON CODE	QTY INC IN UNIT
20	1	PAWZZ	5905-00-111-4743	RCR20G602JS	01349	RESISTOR, FIXED, COMPOSITION		EA 6
20	2	PAWZZ	5905-00-141-1165	RCR20G602JS	01349	RESISTOR, FIXED, COMPOSITION		EA 12

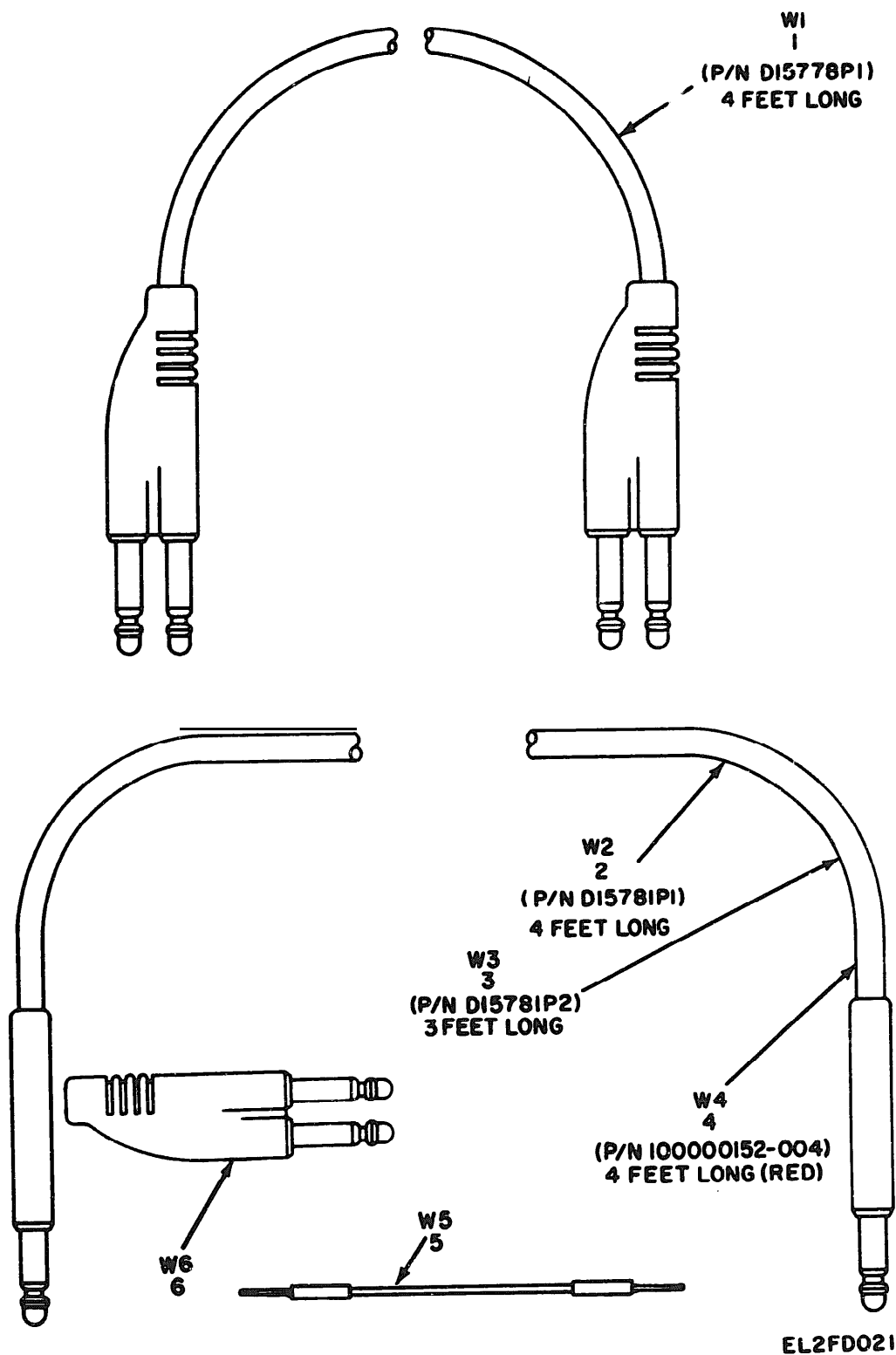


Figure 21. Patch card assemblies.

TM 11-5895-414-40P / NAVELEX 0967-LP-301-5670 / TO 31S5-2FYQ42-224
 REPAIR PARTS LIST (CONTINUED)

SECTION II

(1) UNITS		(2)	(3)	(4)	(5)	(6)	(7)	(8)
(a) FIG. NO.	(b) ITEM NO.	QSR CODE	NATIONAL STOCK NUMBER	PART NUMBER	PCOM	DESCRIPTION	USABLE ON CODE	QTY INC IN UNIT
						GROUP 25 PATCH CORD ASSEMBLIES		
21	1	PAWZZ	5995-00-105-0043	4-15778-0010	70674	PATCH CORD ASSEMBLY		EA 1
21	2	PAWZZ	5995-00-105-0044	D19781P1	70674	PATCH CORD ASSEMBLY		EA 1
21	3	PAWZZ	5995-00-105-0045	D19781P2	70674	PATCH CORD ASSEMBLY		EA 1
21	4	KDHZZ		100000152-004	46059	PATCH CORD ASSEMBLY (RED)		EA 1
21	5	PAWZZ	5995-00-258-3671	L3P70W	19151	PATCH CORD ASSEMBLY		EA 1
21	6	PAWZZ	5935-00-113-7507	PJ-746	70674	PATCH PLUG, BACK TO BACK		EA 1

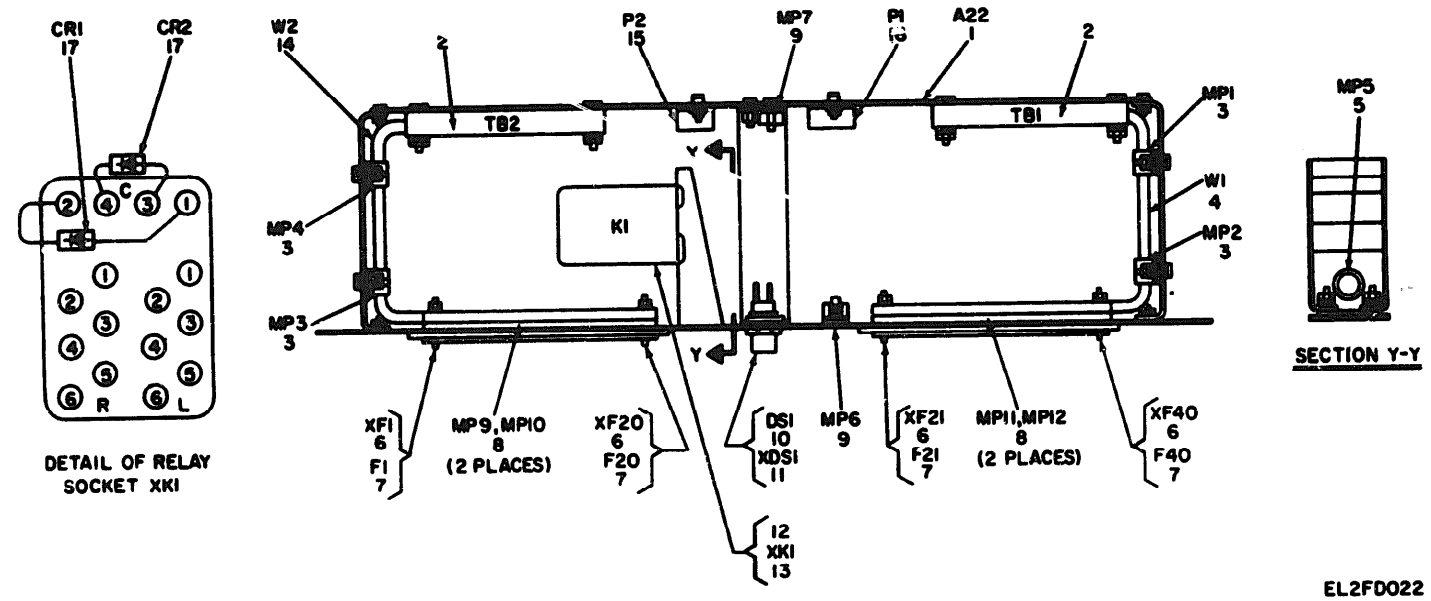


Figure 22. Fuse panel, 368-41453-1.

TM 11-5895-414-40P / NAVELEX 0967-LP-301-5670 / TO 3185-2FYQ42-224
REPAIR PARTS LIST (CONTINUED)

SECTION II

(1) CLASS		(2)	(3)	(4)	(5)	(6)	(7)	(8)
(a) FIG. NO.	(b) ITEM NO.	SMR CODE	NATIONAL STOCK NUMBER	PART NUMBER	FSCM	DESCRIPTION	USEABLE ON CODE	UM QTY INC IN UNIT
						GROUP 26 FUSE PANEL		
22	1	XDHDT		368-41453-1	46859	FUSE PANEL	EA	1
22	2	PAMZZ	5940-00-060-8067	3-582440-9	00779	TERMINAL BOARD	EA	2
22	3	PAMZZ	5348-00-420-7606	MS25281-4	96906	CLAMP,LOOP	EA	4
22	4	XDHZZ		461-4769	46859	WIRING HARNESS,BRANCHED	EA	1
22	5	PAMZZ	5325-00-202-2515	1043-1C	72653	GROMMET,RUBBER	EA	1
22	6	PAMZZ	5920-00-968-3238	HLT	71400	FUSEHOLDER	EA	1
22	7	PAMZZ	5920-00-995-6079	GHT1-2	71400	FUSE,INDICATOR ALARM	EA	1
22	8	PAMZZ	5920-00-973-1271	268-19221-4	46859	STRIP,FUSE	EA	4
22	9	XDHZZ		MS25281-3	96906	CLAMP,LOOP	EA	2
22	10	PAMZZ	6240-00-683-0560	345	71744	LAMP,INCANDESCENT	EA	1
22	11	XDHZZ		192-8104-604	72619	LAMPHOLDER	EA	1
22	12	PAMZZ	5945-00-772-6409	A8516	71482	RELAY,ARMATURE	EA	1
22	13	PAMZZ	5935-00-169-1288	RP1439163	71482	SOCKET,RELAY	EA	1
22	14	XDHZZ		461-4768	46859	WIRING HARNESS,BRANCHED	EA	1
22	15	PAMZZ	5935-00-665-7965	P304AB	71785	CONNECTOR,RECEPTACLE,ELEC	EA	1
22	16	PAMZZ	5935-00-257-7196	P306AB	71785	CONNECTOR,RECEPTACLE,ELEC	EA	1
22	17	PAMZZ	5961-00-577-6214	1N538	81349	SEMICONDUCTOR DEVICE,DIODE	EA	2

SECTION IV

NATIONAL STOCK NUMBER AND PART NUMBER INDEX

NOTE: LATEST NATIONAL STOCK NUMBER AND PART NUMBER ASSIGNMENTS ARE INCLUDED AT END OF INDEX

NATIONAL STOCK NO	FIGURE NUMBER	ITEM NUMBER	NATIONAL STOCK NO	FIGURE NUMBER	ITEM NUMBER
5325-00-202-2515	22	5	5905-00-681-0566	15	2
5325-00-998-3351	1	4	5905-00-924-6676	12	9
5325-00-998-3351	2	4	5910-00-712-6170	10	7
5325-00-998-3351	3	4	5910-00-724-6079	10	7
5325-00-998-3351	6	4	5910-00-725-4795	10	7
5325-00-998-3351	7	4	5910-00-727-4005	10	7
5325-00-998-3351	8	4	5910-00-765-6316	10	7
5325-00-998-3351	9	4	5910-00-913-1109	10	7
5325-00-998-3351	11	4	5920-00-968-3238	22	6
5325-00-998-3351	12	4	5920-00-973-1271	22	8
5325-00-998-3351	17	4	5920-00-995-6079	22	7
5348-00-194-4827	19	5	5930-00-166-3447	18	4
5348-00-420-7616	22	3	5930-00-826-1305	9	14
			5935-00-079-3172	1	2
5365-00-720-6341	1	5	5935-00-079-3172	2	2
5365-00-720-6341	2	5	5935-00-079-3172	3	2
5365-00-720-6341	3	5	5935-00-079-3172	6	2
5365-00-720-6341	6	5	5935-00-079-3172	7	2
5365-00-720-6341	7	5	5935-00-079-3172	8	2
5365-00-720-6341	8	5	5935-00-079-3172	9	2
5365-00-720-6341	9	5	5935-00-079-3172	11	2
5365-00-720-6341	11	5	5935-00-079-3172	12	2
5365-00-720-6341	12	3	5935-00-079-3172	17	2
5365-00-720-6341	17	5	5935-00-125-2347	4	6
5905-00-160-1765	10	1	5935-00-131-9667	2	13
5905-00-104-8336	10	24	5935-00-131-9667	4	5
5905-00-104-8347	2	8	5935-00-131-9667	8	14
5905-00-104-8347	17	10	5935-00-131-9667	17	15
5905-00-104-8348	10	16	5935-00-131-9667	17	15
5905-00-106-9344	11	9	5935-00-131-9667	22	13
5905-00-106-9351	10	19	5935-00-192-4825	18	2
5905-00-111-4743	8	7	5935-00-234-2100	19	6
5905-00-111-4743	9	6	5935-00-257-7196	22	16
5905-00-111-4743	10	8	5935-00-665-7965	22	15
5905-00-111-4743	20	1	5935-00-760-6417	19	7
5905-00-114-5398	18	21	5935-00-812-3399	4	12
5905-00-121-9861	18	8	5935-00-812-3409	4	11
5905-00-141-0591	10	14	5935-00-827-8007	10	10
5905-00-141-0595	10	3	5935-00-877-2209	7	9
5905-00-141-0698	10	17	5935-00-877-2210	17	17
5905-00-141-1130	10	4	5935-00-877-2211	17	20
5905-00-141-1165	8	11	5935-00-877-2212	17	18
5905-00-141-1165	20	2	5935-00-877-2214	8	15
5905-00-141-1160	10	20	5935-00-877-2215	3	9
5905-00-256-9957	4	10	5935-00-877-2215	4	8
5905-00-577-0461	13	1	5935-00-877-2216	6	6
5905-00-577-0461	14	2	5935-00-877-2216	7	8
5905-00-577-0461	15	1	5935-00-877-2216	9	8
5905-00-601-0566	13	4	5935-00-877-2217	6	7
5905-00-681-0566	14	1	5935-00-877-2217	7	7
			5935-00-877-2217	8	13

NATIONAL STOCK NUMBER AND PART NUMBER INDEX (CONTINUED)

	NATIONAL STOCK NO	FIGURE NUMBER	ITEM NUMBER	NATIONAL STOCK NO	FIGURE NUMBER	ITEM NUMBER
	5935-00877-2217	9	7	6250-00-073-5020	8	20
	5935-00-877-2222	7	6	6250-00-073-5020	9	10
	5935-00-877-228	2	14	6250-00-073-5010	17	13
	5935-877-2228	17	19	6250-00-106-6410	19	4
	5935-00-877-2257	8	16			
	5935-00-905-6407	1	9			
	5935-00-905-6407	2	12			
	5935-00-905-6407	4	9			
	5935-00-905-6407	11	16			
	5935-00-905-6407	12	10			
	5935-00-905-6407	17	16			
	5935-00-909-5682	1	7			
	5935-00-909-5682	1	11			
	5935-00-909-5682	3	7			
	5935-00-909-5682	4	7			
	5935-00-909-5682	11	14			
	5935-00-909-5682	17	14			
	5940-00-060-8067	22	2			
	5940-00-071-0297	11	11			
	5940-00-072-0038	13	2			
	5940-00-072-0046	2	10			
	5940-00-072-0049	11	7			
49	5940-00-077-2518	8	10			
	5940-00-009-7096	15	3			
	5940-00-271-8641	2	7			
	5940-00-271-8641	11	8			
	5940-00-475-2013	16	23			
	5940-00-627-0581	16	6			
	5940-00-038-2444	19	6			
	5961-00-084-9064	10	6			
	5961-00-103-4004	10	2			
	5961-00-103-4006	10	22			
	5961-00-577-6214	22	17			
	5961-00-901-4862	10	5			
	5961-00-930-5325	10	15			
	6210-00-075-0426	2	17			
	6210-00-075-0426	4	2			
	6210-00-075-0426	8	18			
	6210-00-075-0426	9	12			
	6210-00-075-0426	17	11			
	6210-00-419-8389	19	2			
	6240-00-073-5759	2	18			
	6240-00-073-5759	4	3			
	6240-00-073-5759	8	19			
	6240-00-073-5759	9	11			
	6240-00-073-5759	17	12			
	6240-00-406-8447	19	3			
	6240-00-683-0560	22	10			
	6250-00-073-5028	2	19			
	6250-00-073-5028	4	4			

SECTION IV

NATIONAL STOCK NUMBER AND PART NUMBER INDEX (CONTINUED)

PART NUMBER	FSCM	FIG NO.	ITEM NO.	PART NUMBER	FSCM	FIG NO.	ITEM NO.
				015976P3	70674	11	10
				015976P4	70674	11	6
ARC16	71462	22	12	015988	70674	12	8
CHT336A	82389	18	3	015981	70674	12	7
CHT336C	82389	19	7	015982	70674	12	6
CH20F0102G03	81349	10	7	015983P2	70674	13	2
CH30F0122G03	81349	10	7	015983P3	70674	13	3
CH39F0152G03	81349	10	7	015989-1	70674	17	17
CH30F0102G03	81349	10	7	015990-1	70674	17	20
CH38F0202G03	81349	10	7	015991-1	70674	17	18
CH30F0222G03	81349	10	7	GHT1-2	71400	22	7
CH30F0242G03	81349	10	7	HLT	71400	22	6
015319P10	70674	9	13	JJ022	81349	18	2
015319P12	70674	2	15	JJ074	81349	19	8
015319P2	70674	1	8	LT47	82389	19	4
015319P2	70674	11	15	L3P78M	19151	21	5
015319P3	70674	1	6	MS21104WD14	96906	18	9
015314P3	70674	3	6	MS25281-10	96906	19	10
015319P3	70674	11	13	MS25281-3	96906	22	9
015319P8	70674	3	8	MS25281-4	96906	22	3
015319P9	70674	2	16	PJ724	70674	4	6
015319P9	70674	8	17	PJ729B	70674	2	13
015319P9	70674	4	9	PJ729B	70674	4	5
015770	70674	1	1	PJ729B	70674	8	14
015771	70674	9	1	PJ729B	70674	17	15
015772	70674	17	1	PJ729M	70674	2	17
015773	70674	11	1	PJ729M	70674	4	2
015774	70674	2	1	PJ729M	70674	8	18
015775	70674	3	1	PJ729M	70674	9	12
015776	70674	8	1	PJ729M	70674	17	11
015777	70674	7	1	PJ805G	70674	8	15
				PJ824	70674	3	9
015779	70674	6	1	PJ824	70674	4	8
015786	70674	12	1	PJ824G	70674	6	6
015781P1	70674	21	2	PJ824G	70674	7	8
015781P2	70674	21	3	PJ824G	70674	9	8
015782	70674	4	1	PJ838	70674	1	7
015928-2	70674	7	9	PJ838	70674	2	11
015941-2	70674	9	14	PJ838	70674	3	7
015946P1	70674	8	10	PJ838	70674	4	7
015946P2	70674	8	9	PJ838	70674	11	14
015947P0	70674	2	10	PJ838	70674	17	14
015947P1	70674	2	9	PJ838G	70674	6	7
015948P0	70674	17	7	PJ838G	70674	7	7
015948P1	70674	17	6	PJ838G	70674	8	13
015966P2	70674	14	3	PJ838G	70674	9	7
015967P2	70674	15	3	PJ839	70674	1	9
015968	70674	12	11	PJ839	70674	2	12
015976P1	70674	11	11	PJ839	70674	4	9
015976P2	70674	11	7	PJ839	70674	11	16

SECTION IV

NATIONAL STOCK NUMBER AND PART NUMBER INDEX (CONTINUED)

51

PART NUMBER	FSCN	FIG NO.	ITEM NO.	PART NUMBER	FSCN	FIG NO.	ITEM NO.
PJ039	70674	12	16	1N707A	80131	18	25
PJ039	70674	17	16				
PJ3396	70674	7	6	100-225-10A1	99378	19	9
PJ041	70674	2	14	100-225-13-4	99378	18	7
PJ041	70674	17	19	1000-150	06964	10	6
PJ041G	70674	8	16	100000152-004	46859	21	4
PJ050	70674	2	19	100003047-001	95692	18	1
PJ050	70674	4	4	100003047-002	95692	19	1
PJ050	70674	8	20	1001	21960	18	23
PJ050	70674	9	10	1043-1C	72653	22	5
PJ050	70674	17	13	1194370	70947	10	10
PJ050	70674	2	10	119437C	70947	10	11
PJ050	70674	4	3	125081	80245	2	7
PJ050	70674	8	19	125081	80245	11	8
PJ050	70674	9	11	1250C1	80245	8	6
PJ050	70674	17	12	1250C1	80245	17	9
P1001	02309	19	5	130-1220	71600	19	8
P304A0	71705	22	15	130-1230	71600	18	6
P304A0	71705	22	16	14242	06964	10	1
RCR206101JS	01349	11	9	17-10250	02660	1	2
RCR206103JS	01349	10	14	17-10250	02660	2	2
RCR206104JS	01349	10	24	17-10250	02660	3	2
RCR206222JS	01349	10	20	17-10250	02660	6	2
RCR206225JS	01349	10	21	17-10250	02660	7	2
RCR206272JS	01349	10	4	17-10250	02660	8	2
RCR206273JS	01349	10	19	17-10250	02660	9	2
RCR206332JS	01349	10	16	17-10250	02660	11	2
RCR206472JS	01349	10	3	17-10250	02660	12	2
RCR206402JS	01349	8	11	17-10250	02660	17	2
RCR206402JS	01349	20	2	17-10250-1	02660	4	11
RCR206402JS	01349	8	7	17-20250-1	02660	4	12
RCR206402JS	01349	9	6	192-0104-004	72619	22	11
RCR206402JS	01349	10	8	2N3905	80131	10	15
RCR206402JS	01349	20	1	2N3630	80131	10	5
RCR206402JS	01349	10	17	2N404	81349	10	10
RCR206101JS	01349	2	8	2300022	95692	18	4
RCR206101JS	01349	17	10	260-19771-4	46859	22	8
RCR206102JS	01349	10	8	3-582440-9	80779	22	2
RCR206112JS	01349	4	10	345	00000	18	5
RP06100292KK	01349	12	9	345	71744	22	10
RP1A39163	71402	22	13	360-40000-2	46859	5	1
RW21V102	01349	13	1	360-41453-1	46859	22	1
RW21V102	01349	14	2	390-10200-1	46859	16	1
RW21V102	01349	15	1	492-0137-100	72619	19	2
RW21V202	01349	13	4	461-4760	46859	22	14
RW21V202	01349	14	1	461-4769	46859	22	4
RW21V202	01349	15	2	5-0-220	94222	1	3
1N277	01349	10	12	5-0-220	94222	2	3
1N930	01349	22	17	5-0-220	94222	3	3
				5-0-220	94222	6	3

SECTION IV

NATIONAL STOCK NUMBER AND PART NUMBER INDEX (CONTINUED)

PART NUMBER	FSCM	FIG NO.	ITEM NO.
9-0-220	94222	7	3
9-0-220	94222	8	3
9-0-220	94222	9	3
9-0-220	94222	11	3
9-0-220	94222	12	5
9-0-220	94222	17	3
6C2	88806	19	3
66199-3	88779	16	J
771	83330	8	8
771	83330	17	8
772	83330	2	6
773	83330	8	12
773	83330	11	12
85-34-101-17	94222	1	5
85-34-101-17	94222	2	5
85-34-101-17	94222	3	5
85-34-101-17	94222	6	5
85-34-101-17	94222	7	5
85-34-101-17	94222	8	5
85-34-101-17	94222	9	5
85-34-101-17	94222	11	5
85-34-101-17	94222	12	3
85-34-101-17	94222	17	5
85-47-101-15	94222	1	4
85-47-101-15	94222	2	4
85-47-101-15	94222	3	4
85-47-101-15	94222	6	4
85-47-101-15	94222	7	4
85-47-101-15	94222	8	4
85-47-101-15	94222	9	4
85-47-101-15	94222	11	4
85-47-101-15	94222	12	4
85-47-101-15	94222	17	4
981804	86964	10	2
988015	86964	10	22

52

LATEST NATIONAL STOCK NUMBER ASSIGNMENTS

NATIONAL STOCK NO.	FIGURE NUMBER	ITEM NUMBER
5325-00-286-5898	1	3
5325-00-2436-5898	2	3
5325-00-286-5898	3	3
5325-00-286-5898	6	3
5325-00-286-5898	7	3
5325-00-286-5898	8	3
5325-00-286-5898	9	3
5325-00-286-5898	11	3
5325-00-286-5898	12	5
5325-00-286-5898	17	3
5340-00-200-3036	8	8
5340-00-200-3036	17	8
5340-00-827-6389	8	12
5340-00-827-6389	11	12
5340-01-020-3591	2	6
5910-00-765-6314	10	7
5935-00-113-7507	21	6
5935-00-755-3428	10	11
5940-00-871-7334	16	3
5945-00-772-6409	22	12
5961-00-542-7291	10	9
5961-00-752-5229	10	18
5961-00-821-2315	10	25
5961-00-940-8567	10	12
5961-00-995-2310	10	13
5995-00-105-0043	21	1
5995-00-105-0044	21	2
5995-00-105-0045	21	3
5995-00-258-3671	21	5

LATEST PART NUMBER ASSIGNMENTS

PART NUMBER	FSCM	FIG. NO.	ITEM NO.
JAN1N658	81349	10	9
JAN1N752A	81349	10	13
PJ-746	70674	21	6
4-15778-0010	70674	21	1
990BRN/TAN	90484	16	2

RECOMMENDED CHANGES TO EQUIPMENT TECHNICAL MANUALS



SOMETHING WRONG WITH THIS MANUAL?

THEN... JOT DOWN THE DOPE ABOUT IT ON THIS FORM, TEAR IT OUT, FOLD IT AND DROP IT IN THE MAIL!

FROM: (YOUR UNIT'S COMPLETE ADDRESS)

Commander
Stateside Army Depot
ATTN: AMSTA-US
Stateside, N.J. 07703

DATE 10 July 1975

PUBLICATION NUMBER

TM 11-5840-340-12

DATE

23 Jan 74

TITLE

Radar Set AN/SPS-76

BE EXACT... PIN-POINT WHERE IT IS

PAGE NO.	PARA-GRAPH	FIGURE NO.	TABLE NO.
----------	------------	------------	-----------

2-25	2-28		
3-10	3-3		3-1
5-6	5-8		

FO3

IN THIS SPACE TELL WHAT IS WRONG AND WHAT SHOULD BE DONE ABOUT IT:

Recommend that the installation antenna alignment procedure be changed through to specify a 2° IFF antenna lag rather than 1°.

REASON: Experience has shown that with only a 1° lag, the antenna servo system is too sensitive to wind gusting in excess of 20 knots, and has a tendency to rapidly accelerate and decelerate as it hunts, causing strain to the drive train. Hunting is minimized by adjusting the lag to 2° without degradation of operation.

Item 5, Function column. Change "2 db" to "3db."

REASON: The adjustment procedure for the TRANS POWER FAULT indicator calls for a 3 db (500 watts) adjustment to light the TRANS POWER FAULT indicator.

Add new step f.1 to read, "Replace cover plate removed in step e.1, above."

REASON: To replace the cover plate.

Zone C 3. On J1-2, change "+24 VDC to "+5 VDC."

REASON: This is the output line of the 5 VDC power supply. + 24 VDC is the input voltage.

TYPED NAME, GRADE OR TITLE, AND TELEPHONE NUMBER

SSG I. M. DeSpirito 999-1776

SIGN HERE:

SSG I. M. DeSpirito

DA FORM 2028-2
1 AUG 74

P.S.--IF YOUR OUTFIT WANTS TO KNOW ABOUT YOUR MANUAL "FIND" MAKE A CARBON COPY OF THIS AND GIVE IT TO YOUR HEADQUARTERS.

HISA 1686-75

RECOMMENDED CHANGES TO EQUIPMENT TECHNICAL MANUALS



SOMETHING WRONG WITH THIS MANUAL?

THEN... JOT DOWN THE DOPE ABOUT IT ON THIS FORM, TEAR IT OUT, FOLD IT AND DROP IT IN THE MAIL!

FROM: (YOUR UNIT'S COMPLETE ADDRESS)

DATE

PUBLICATION NUMBER

DATE

TITLE

TM 11-5895-414-40P

10 Aug 78

BE EXACT... PIN-POINT WHERE IT IS

IN THIS SPACE TELL WHAT IS WRONG AND WHAT SHOULD BE DONE ABOUT IT:

PAGE NO.	PARA-GRAPH	FIGURE NO.	TABLE NO.
----------	------------	------------	-----------

TEAR ALONG DOTTED LINE

TYPED NAME, GRADE OR TITLE, AND TELEPHONE NUMBER

SIGN HERE:

DA FORM 2028-2
1 AUG 74

P.S.--IF YOUR OUTFIT WANTS TO KNOW ABOUT YOUR MANUAL "FIND" MAKE A CARBON COPY OF THIS AND GIVE IT TO YOUR HEADQUARTERS.

FILL IN YOUR
UNIT'S ADDRESS

FOLD BACK

DEPARTMENT OF THE ARMY

OFFICIAL BUSINESS

PENALTY FOR PRIVATE USE, \$300

POSTAGE AND FEES PAID
DEPARTMENT OF THE ARMY
DDG-314



Commander
US Army Communications and
Electronics Materiel Readiness Command
ATTN: DRSEL-MA-Q
Fort Monmouth, New Jersey 07703

TEAR ALONG DOTTED LINE

FOLD BACK

REVERSE OF DA FORM 2026-2

RECOMMENDED CHANGES TO EQUIPMENT TECHNICAL MANUALS



THEN...JOT DOWN THE DOPE ABOUT IT ON THIS FORM, TEAR IT OUT, FOLD IT AND DROP IT IN THE MAIL!

SOMETHING WRONG WITH THIS MANUAL?

FROM: (YOUR UNIT'S COMPLETE ADDRESS)

DATE

PUBLICATION NUMBER

DATE

TITLE

TM 11-5895-414-40P

10 Aug 78

BE EXACT...PIN-POINT WHERE IT IS

IN THIS SPACE TELL WHAT IS WRONG AND WHAT SHOULD BE DONE ABOUT IT:

PAGE NO.	PARA-GRAPH	FIGURE NO.	TABLE NO.

TYPED NAME, GRADE OR TITLE, AND TELEPHONE NUMBER

SIGN HERE:

TEAR ALONG DOTTED LINE

FILL IN YOUR
UNIT'S ADDRESS

FOLD BACK

DEPARTMENT OF THE ARMY

POSTAGE AND FEES PAID
DEPARTMENT OF THE ARMY
DOD-214



OFFICIAL BUSINESS
PENALTY FOR PRIVATE USE, \$300

Commander
US Army Communications and
Electronics Materiel Readiness Command
ATTN: DRSEL-MA-Q
Fort Monmouth, New Jersey 07703

TEAR ALONG DOTTED LINE

FOLD BACK

REVERSE OF DA FORM 202-3

RECOMMENDED CHANGES TO EQUIPMENT TECHNICAL MANUALS

SOMETHING WRONG WITH THIS MANUAL?



THEN... JOT DOWN THE DOPE ABOUT IT ON THIS FORM, TEAR IT OUT, FOLD IT AND DROP IT IN THE MAIL!

FROM (YOUR UNIT'S COMPLETE ADDRESS)

DATE

PUBLICATION NUMBER

DATE

TITLE

TM 11-5895-414-40P

10 Aug 78

BE EXACT... PIN-POINT WHERE IT IS

IN THIS SPACE TELL WHAT IS WRONG AND WHAT SHOULD BE DONE ABOUT IT:

PAGE NO.	PARA-GRAPH	FIGURE NO.	TABLE NO.
----------	------------	------------	-----------

TEAR ALONG DOTTED LINE

TYPED NAME, GRADE OR TITLE, AND TELEPHONE NUMBER

SIGN HERE:

DA FORM 2028-2 1 AUG 74

P.S.--IF YOUR OUTFIT WANTS TO KNOW ABOUT YOUR MANUAL "FIND," MAKE A CARBON COPY OF THIS AND GIVE IT TO YOUR HEADQUARTERS.

FILL IN YOUR
UNIT'S ADDRESS

FOLD BACK

DEPARTMENT OF THE ARMY

POSTAGE AND FEES PAID
DEPARTMENT OF THE ARMY
OOD-314



OFFICIAL BUSINESS
PENALTY FOR PRIVATE USE, \$300

Commander
US Army Communications and
Electronics Materiel Readiness Command
ATTN: DRSEL-MA-Q
Fort Monmouth, New Jersey 07703

TEAR ALONG DOTTED LINE

FOLD BACK

REVERSE OF DA FORM 2025-2

By Order of the Secretaries of the Army, the Navy, and the Air Force:

BERNARD W. ROGERS
General, United States Army
Chief of Staff

Official:

J.C. PENNINGTON
Brigadier General, United States Army
The Adjutant General

EARL B. FOWLER
Rear Admiral, United States Navy
Commander, Naval Electronic
Systems Command

Official:

F. M. ROGERS, General, USAF
Commander, Air Force Logistics Command

DAVID C. JONES, General, USAF
Chief of Staff

DISTRIBUTION:

Active Army:

USAINSCOM (2)	ATAD (5)
USASIGS (2)	LBAD (5)
DARCOM (1)	LBAD (15)
TRADOC (1)	TOAD (10)
OS Maj Comd (2)	USA Dep (1) except
USACOMZEUR (2)	Pirmasens (5)
USAREUR (3)	Sig Dep (2)
TECOM (2)	Sig Sec USA Dep (2)
USACC (5)	USAERDAA (1)
HQ 7th Sig Comd (2)	USAERDAW (1)
USASATCOMA (2)	Fort Carson (2)
USACSA (4)	Ft Richardson(CERCOM)2)
USAICS (3)	Units org under fol TOE:
7th & 8th Armies (4)	(1 cy each unit)
Sig Bde(USACC) Korea (1)	11-302
Sig Gp (USACC) Japan (1)	29-134
Sig Gp (USACC) Taiwan (1)	29-136

NG: None

USAR: None

For explanation of abbreviations used, see AR 310-50.

DEPARTMENT OF THE ARMY
US ARMY AG PUBLICATIONS CENTER
1633 WOODSON ROAD
ST. LOUIS, MISSOURI 63114
OFFICIAL BUSINESS
PENALTY FOR PRIVATE USE \$300

POSTAGE AND FEES PAID
DEPARTMENT OF THE ARMY
DOD 314

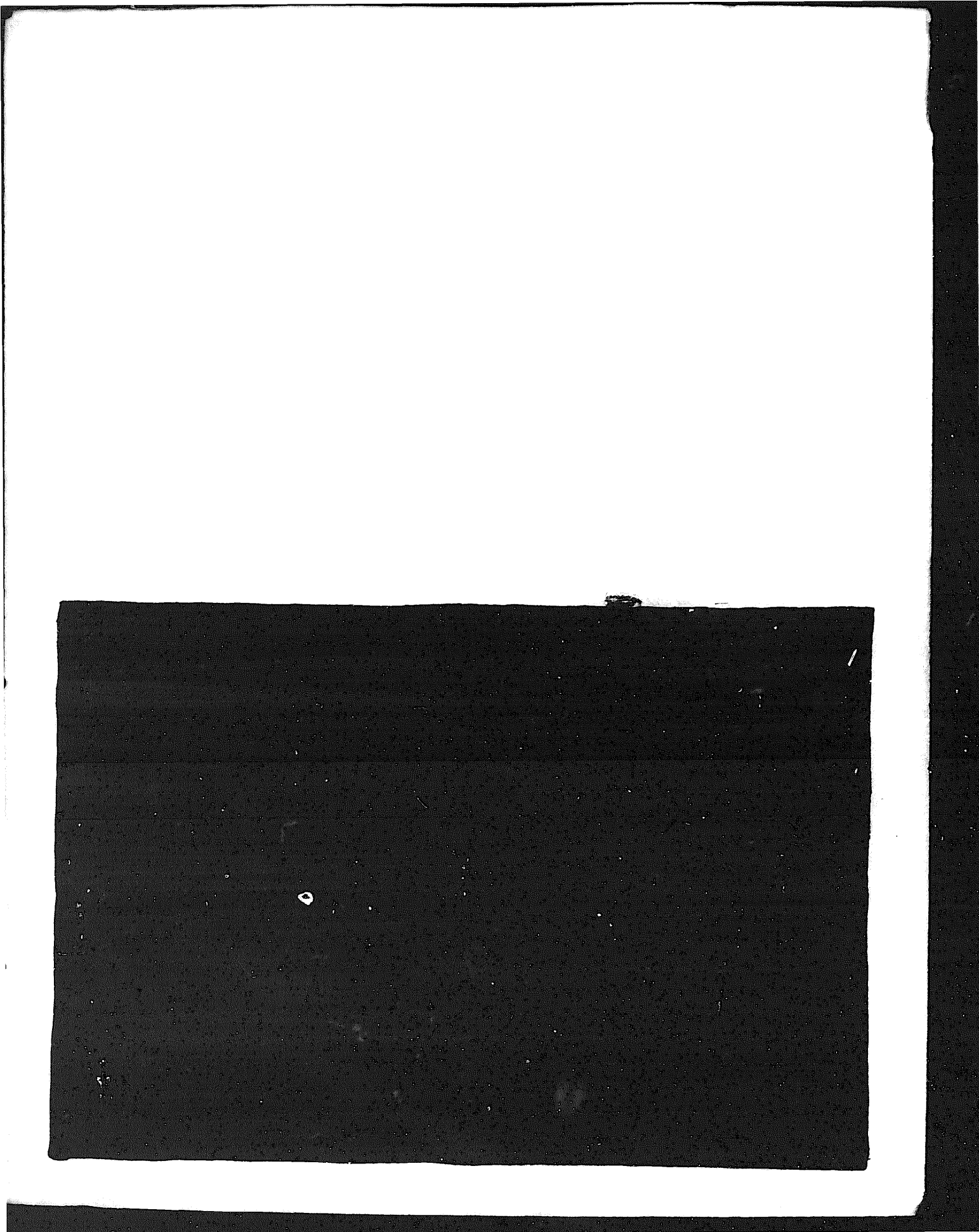


END

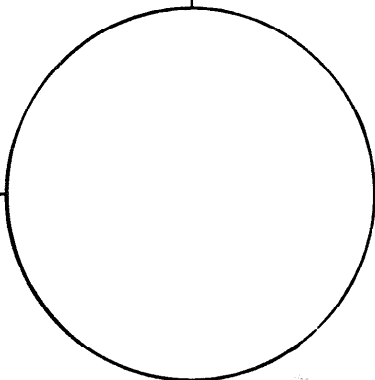
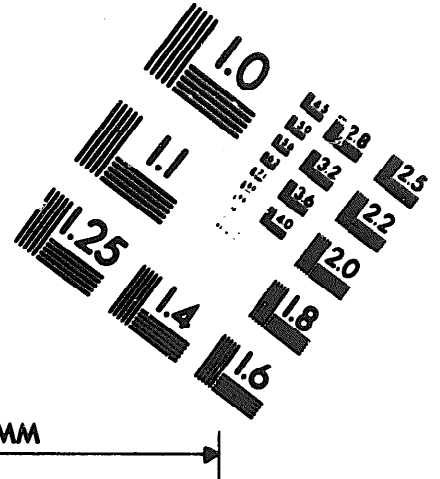
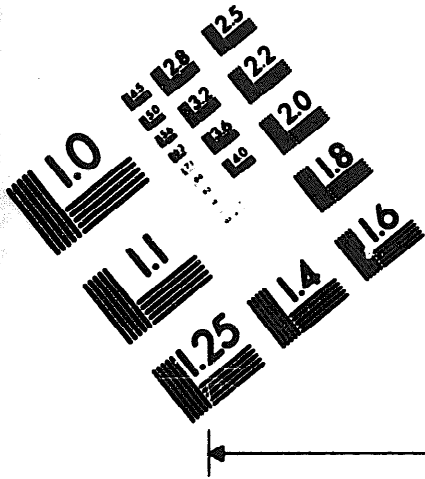
03-04-83

DATE





DEPARTMENT OF THE ARMY
MICROFORM
TEST TARGET



150 MM

1.0 mm (e= .81 mm)

ABCDEFGHIJKLMN OPQRSTUVWXYZ 1234567890
abcdefghijklmnopqrstuvwxyz \$%&' /%# 1/2 3/4 — + x & @ *

1.5 mm (e= 1.09 mm)

ABCDEFGHIJKLMN OPQRSTUVWXYZ 1234567890
abcdefghijklmnopqrstuvwxyz \$%&' /%# 1/2 3/4 — + x & @ *

2.0 mm (e= 1.37 mm)

ABCDEFGHIJKLMN OPQRSTUVWXYZ
abcdefghijklmnopqrstuvwxyz
1234567890 \$%&' /%# 1/2 3/4 — + x & @ *

2.5 mm (e= 1.77 mm)

ABCDEFGHIJKLMN OPQRSTUVWXYZ
abcdefghijklmnopqrstuvwxyz
1234567890 \$%&' /%# 1/2 3/4 — + x & @ *

1.0 mm (e= .81 mm)

ABCDEFGHIJKLMN OPQRSTUVWXYZ 1234567890
abcdefghijklmnopqrstuvwxyz \$%&' /%# 1/2 3/4 — + x & @ *

1.5 mm (e= 1.09 mm)

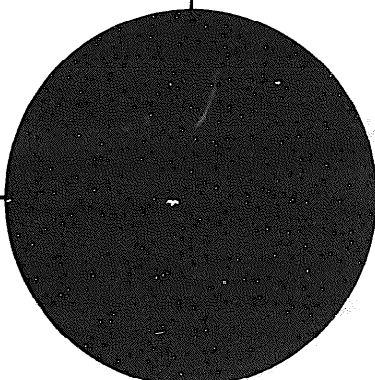
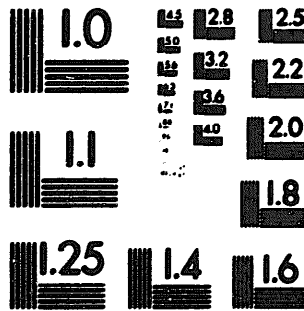
ABCDEFGHIJKLMN OPQRSTUVWXYZ 1234567890
abcdefghijklmnopqrstuvwxyz \$%&' /%# 1/2 3/4 — + x & @ *

2.0 mm (e= 1.37 mm)

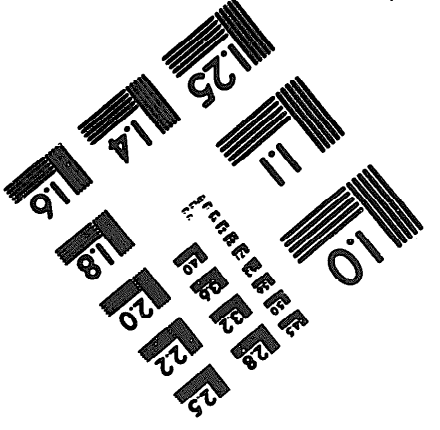
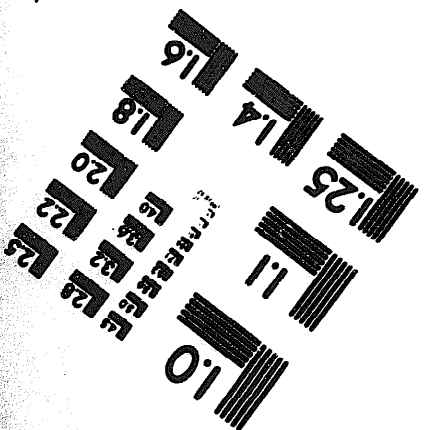
ABCDEFGHIJKLMN OPQRSTUVWXYZ
abcdefghijklmnopqrstuvwxyz
1234567890 \$%&' /%# 1/2 3/4 — + x & @ *

2.5 mm (e= 1.77 mm)

ABCDEFGHIJKLMN OPQRSTUVWXYZ
abcdefghijklmnopqrstuvwxyz
1234567890 \$%&' /%# 1/2 3/4 — + x & @ *



200 MM



250 MM